

RNAV (GPS) X RWY 28R

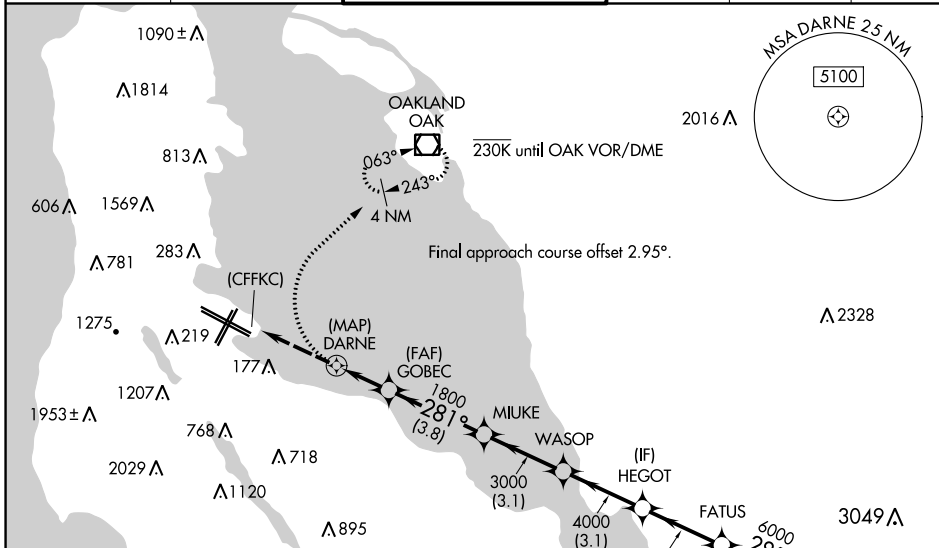
SAN FRANCISCO INTL (SFO)

APP CRS	Rwy Idg	11236
281°	TDZE	13
	Apt Elev	13

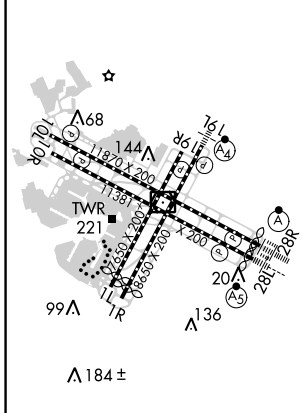
NA Runway 28L and 28R separated by 750 feet centerline to centerline. DME/DME RNP-0.3 NA. When executing a missed approach or go-around, unless otherwise instructed by ATC, initially turn right to 030° utilizing heading mode. Inoperative table does not apply. For uncompensated Baro-VNAV systems, LNAV/VNAV NA below 2°C (36°F) or above 54°C (130°F).
 *If a go-around executed after passing DARNE, go-around requires a minimum climb of 380 feet per NM to 1800.

ALS-F2 MISSED APPROACH:
 Climbing right turn to 3000 on heading 030° then direct OAK VOR/DME and hold.

D-ATIS 113.7 115.8 118.85	NORCAL APP CON 134.5 338.2	SAN FRANCISCO TOWER 120.5 269.1	GND CON 121.8	CINC DEL 118.2	CPDLC
-------------------------------------	--------------------------------------	---	-------------------------	--------------------------	-------

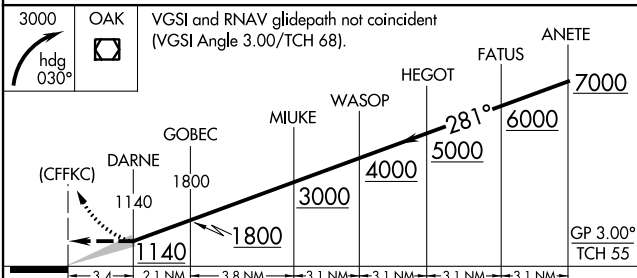


ELEV 13	D	TDZE 13
---------	----------	---------



TDZ/CL Rwy 19L and 28R
 REIL Rwy 1L, 1R, and 10L
 HIRL all Rwy

RADAR REQUIRED



CATEGORY	A	B	C	D
LNAV/VNAV DA*	1140-4	1127	11200-4	

SW-2, 03 JAN 2019 to 31 JAN 2019

SW-2, 03 JAN 2019 to 31 JAN 2019