

# RNAV (RNP) Y RWY 28R

SAN FRANCISCO INTL (SFO)

APP CRS	Rwy Idg	<b>11236</b>
<b>284°</b>	TDZE	<b>13</b>
	Apt Elev	<b>13</b>

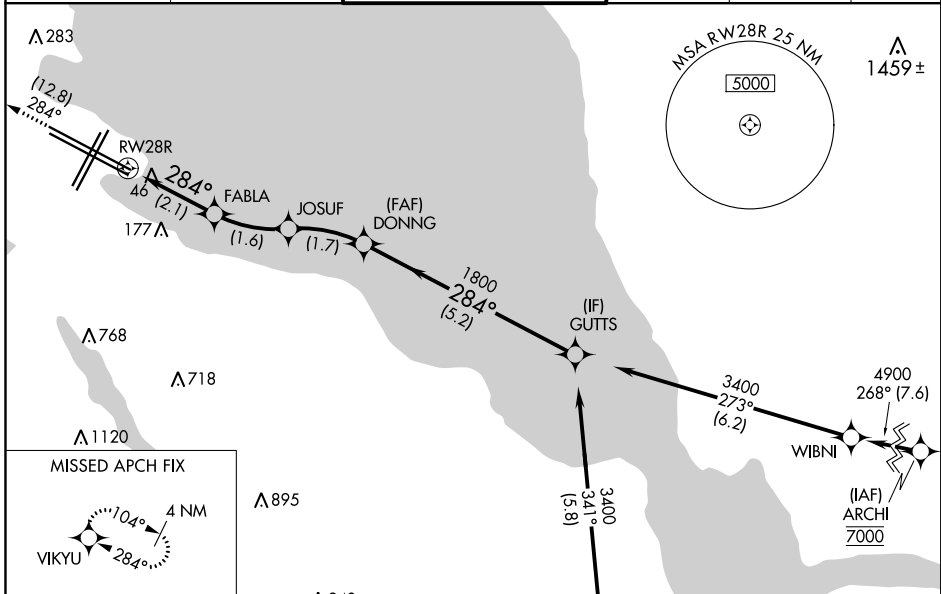
RNP AR APCH, RF required.

▼ For uncompensated Baro-VNAV systems, procedure NA below 3°C or above 54°C. For inop ALS, increase RNP 0.11 all Cats visibility to RVR 4000 and RNP 0.30 all Cats visibility to RVR 4500.

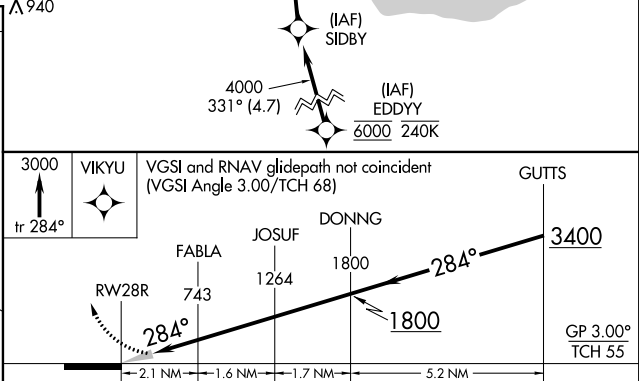
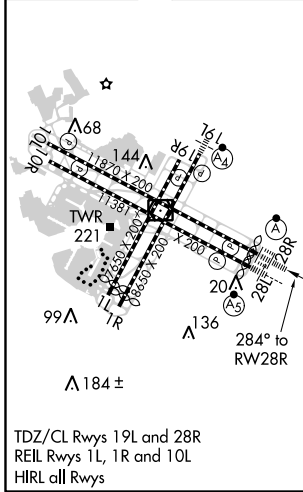


MISSED APPROACH: Climb to 3000 on track 284° to VIKYU and hold.  
 \* Missed approach requires minimum climb of 250 feet per NM to 1600.  
 # Missed approach requires minimum climb of 350 feet per NM to 2100.

D-ATIS <b>113.7 115.8</b> <b>118.85</b>	NORCAL APP CON <b>134.5 338.2</b>	SAN FRANCISCO TOWER <b>120.5 269.1</b>	GND CON <b>121.8</b>	CLNC DEL <b>118.2</b>	CPDLC
---	--------------------------------------	---	-------------------------	--------------------------	-------



ELEV 13	<b>D</b>	TDZE 13
---------	----------	---------



CATEGORY	A	B	C	D
RNP 0.11 DA*		263/24	250 (300-½)	
RNP 0.30 DA#		326/24	313 (400-½)	

**AUTHORIZATION REQUIRED**

SW-2, 03 JAN 2019 to 31 JAN 2019

SW-2, 03 JAN 2019 to 31 JAN 2019