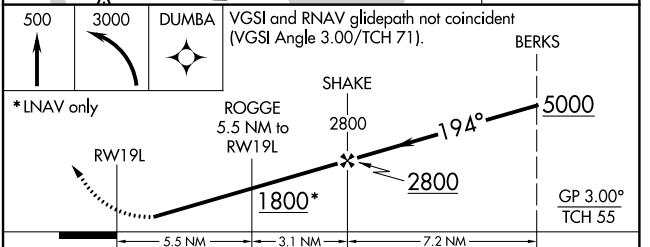
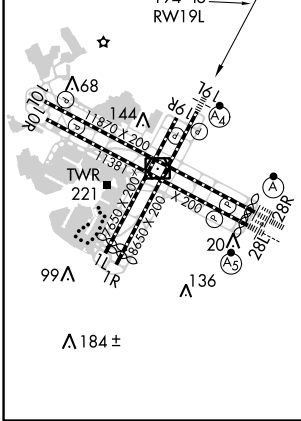
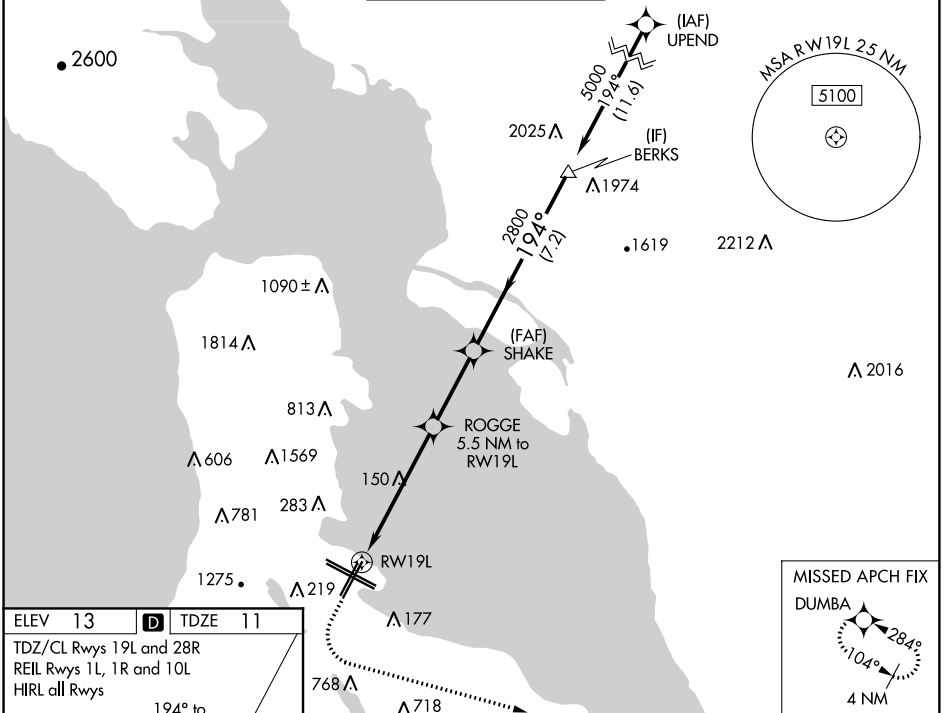


WAAS CH 58015 W19A	APP CRS 194°	Rwy Idg 8650 TDZE 11 Apt Elev 13
--	------------------------	---

RNAV (GPS) RWY 19L

SAN FRANCISCO INTL (SFO)

RNP APCH.		SAN FRANCISCO TOWER		GND CON	CLNC DEL	CPDLC
<p>▼ Helicopter visibility reduction below 1 SM NA. For uncompensated Baro-VNAV systems, LNAV/VNAV NA below 3°C or above 54°C. For inop ALS, increase LPV Cat A/B visibility to RVR 4500, LNAV/VNAV all Cats visibility to RVR 6000 and LNAV Cat A/B to RVR 5500. Inop table does not apply to LPV Cat C/D.</p>		<p>120.5 269.1</p>		<p>121.8</p>	<p>118.2</p>	
D-ATIS		NORCAL APP CON				
<p>113.7 115.8 118.85</p>		<p>134.5 338.2</p>				



CATEGORY	A	B	C	D
LPV DA	293/40	282 (300-¾)	293/50	282 (300-1)
LNAV/VNAV DA	350/40	339 (400-¾)	350/50	339 (400-1)
LNAV MDA	560/40	549 (600-¾)	560-1⅜	549 (600-1⅜)

SW-2, 03 JAN 2019 to 31 JAN 2019

SW-2, 03 JAN 2019 to 31 JAN 2019