

# RNAV (GPS) RWY 10L

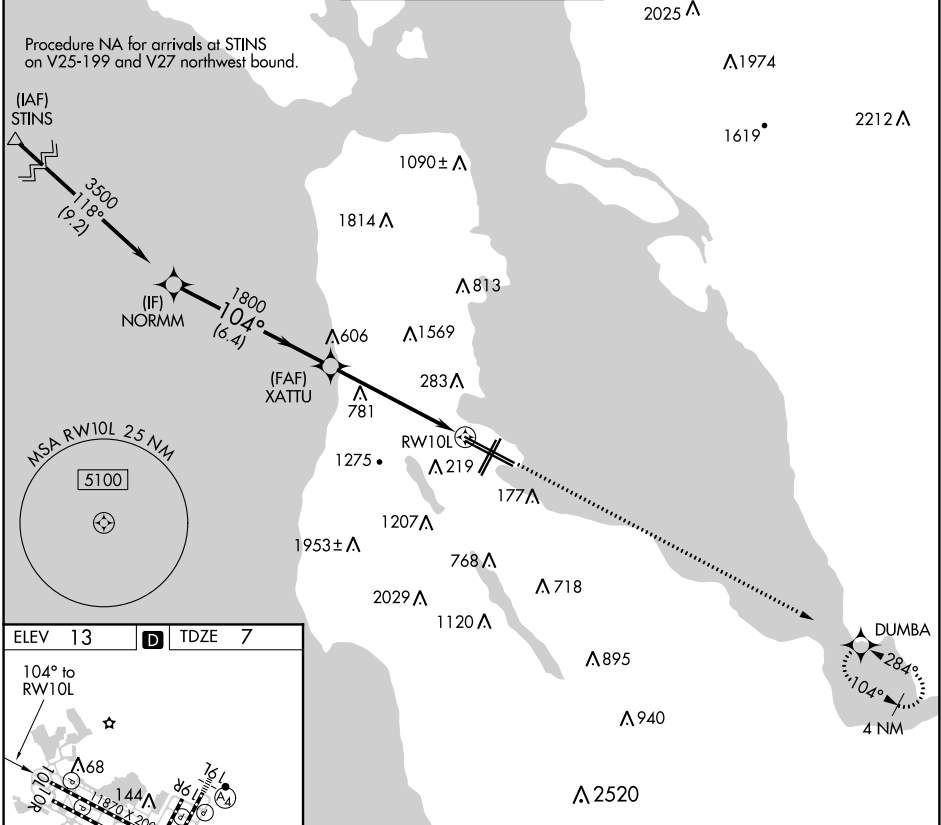
SAN FRANCISCO INTL (SFO)

APP CRS <b>104°</b>	Rwy Idg <b>11193</b>
	TDZE <b>7</b>
	Apt Elev <b>13</b>

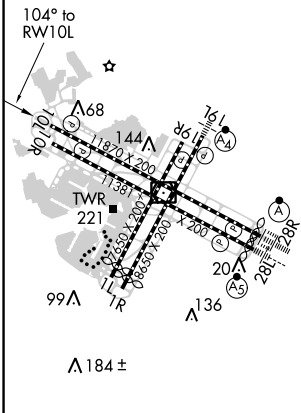
**▽** DME/DME RNP-0.3 NA.  
**△** Helicopter visibility reduction below RVR 4000 NA.

MISSED APPROACH: Climb to 4000 direct DUMBA and hold.

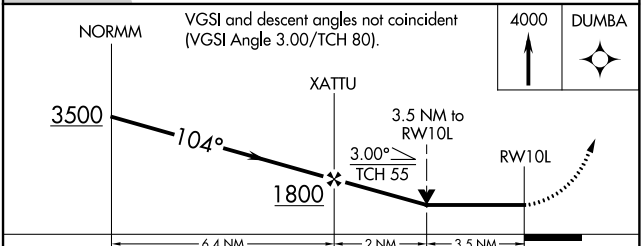
D-ATIS <b>113.7 115.8</b> <b>118.85</b>	NORCAL APP CON <b>134.5 338.2</b>	SAN FRANCISCO TOWER <b>120.5 269.1</b>	GND CON <b>121.8</b>	CLNC DEL <b>118.2</b>	CPDLC
---	--------------------------------------	---	-------------------------	--------------------------	-------



ELEV 13	<b>D</b>	TDZE 7
---------	----------	--------



TDZ/CL Rwy 19L and 28R  
 REIL Rwy 1L, 1R, and 10L  
 HIRL all Rwy



CATEGORY	A	B	C	D
LNAV MDA	1200/60 1193 (1200-1/4)	1200-1/2 1193 (1200-1/2)	1200-3	1193 (1200-3)

SW-2, 03 JAN 2019 to 31 JAN 2019

SW-2, 03 JAN 2019 to 31 JAN 2019