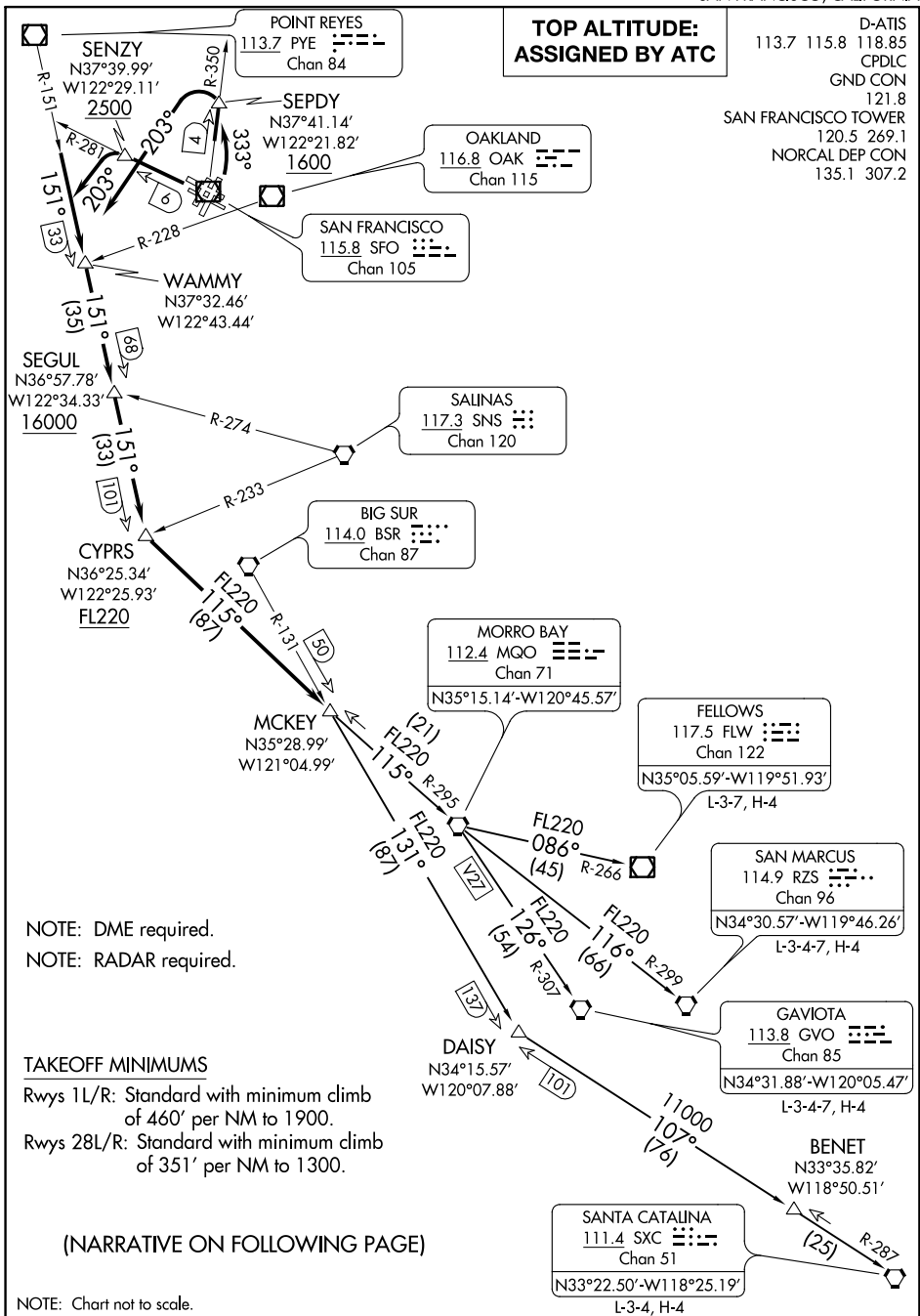


OFFSHORE ONE DEPARTURE

AL-375 (FAA)

SAN FRANCISCO INTL (SFO)
SAN FRANCISCO, CALIFORNIA



**TOP ALTITUDE:
ASSIGNED BY ATC**

D-ATIS 113.7 115.8 118.85
 CPDLC
 GND CON 121.8
 SAN FRANCISCO TOWER 120.5 269.1
 NORCAL DEP CON 135.1 307.2

POINT REYES
 113.7 PYE
 Chan 84

OAKLAND
 116.8 OAK
 Chan 115

SAN FRANCISCO
 115.8 SFO
 Chan 105

SAUNAS
 117.3 SNS
 Chan 120

BIG SUR
 114.0 BSR
 Chan 87

MORRO BAY
 112.4 MQO
 Chan 71
 N35°15.14'-W120°45.57'

FELLOWS
 117.5 FLW
 Chan 122
 N35°05.59'-W119°51.93'
 L-3-7, H-4

SAN MARCUS
 114.9 RZS
 Chan 96
 N34°30.57'-W119°46.26'
 L-3-4-7, H-4

GAVIOTA
 113.8 GVO
 Chan 85
 N34°31.88'-W120°05.47'
 L-3-4-7, H-4

SANTA CATALINA
 111.4 SXC
 Chan 51
 N33°22.50'-W118°25.19'
 L-3-4, H-4

NOTE: DME required.
 NOTE: RADAR required.

TAKEOFF MINIMUMS
 Rws 1L/R: Standard with minimum climb
 of 460' per NM to 1900.
 Rws 28L/R: Standard with minimum climb
 of 351' per NM to 1300.

(NARRATIVE ON FOLLOWING PAGE)

NOTE: Chart not to scale.

OFFSHORE ONE DEPARTURE

SW-2, 03 JAN 2019 to 31 JAN 2019

SW-2, 03 JAN 2019 to 31 JAN 2019