

MODESTO EIGHT ARRIVAL

AL-375 (FAA)

SAN FRANCISCO INTL (SFO)
SAN FRANCISCO, CALIFORNIA

SW-2, 03 JAN 2019 to 31 JAN 2019

ARRIVAL ROUTE DESCRIPTION

CLOVIS TRANSITION (CZQ.MOD8): From over CZQ VORTAC on CZQ R-305 and MOD R-092 to MOD VOR/DME. Thence,

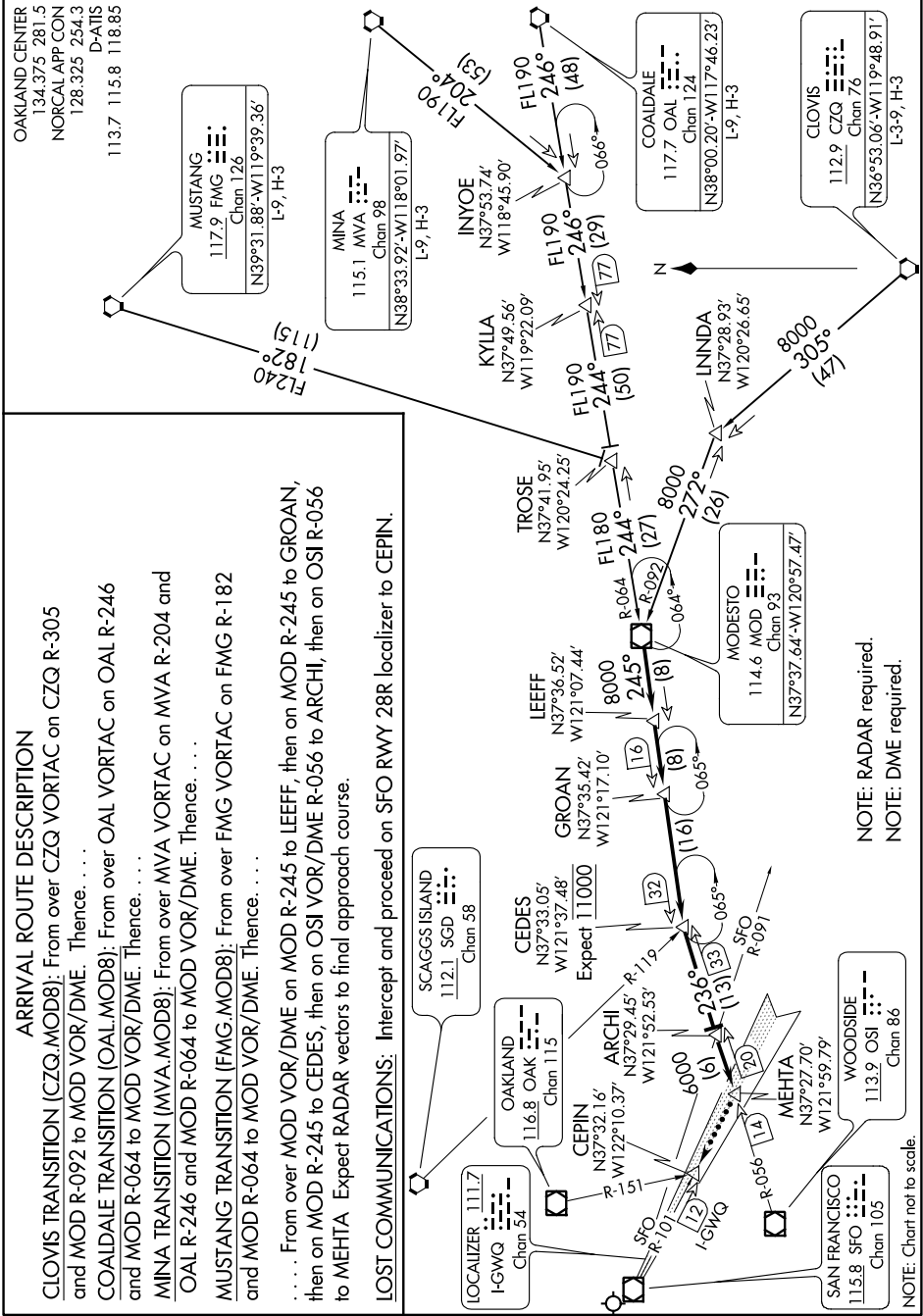
COALDALE TRANSITION (OAL.MOD8): From over OAL VORTAC on OAL R-246 and MOD R-064 to MOD VOR/DME. Thence,

MINA TRANSITION (MVA.MOD8): From over MVA VORTAC on MVA R-204 and OAL R-246 and MOD R-064 to MOD VOR/DME. Thence,

MUSTANG TRANSITION (FMG.MOD8): From over FMG VORTAC on FMG R-182 and MOD R-064 to MOD VOR/DME. Thence,

. From over MOD VOR/DME on MOD R-245 to LEEFF, then on MOD R-245 to GROAN, then on MOD R-245 to CEDES, then on OSI VOR/DME R-056 to ARCHI, then on OSI R-056 to MEHTA. Expect RADAR vectors to find approach course.

LOST COMMUNICATIONS: Intercept and proceed on SFO RWY 28R localizer to CEPIN.



MODESTO EIGHT ARRIVAL

(MOD.MOD8) 17AUG17

SAN FRANCISCO, CALIFORNIA
SAN FRANCISCO INTL (SFO)

SW-2, 03 JAN 2019 to 31 JAN 2019

NOTE: Chart not to scale.