


LOC/DME I-FNP 110.75 Chan 44(Y)	APP CRS 281°	Rwy Idg TDZE Apt Elev	11236 13 13
--	------------------------	-----------------------------	--

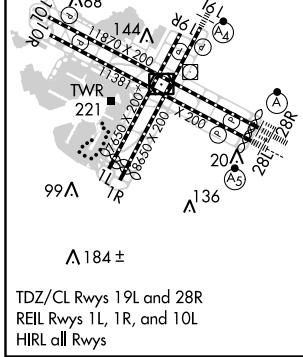
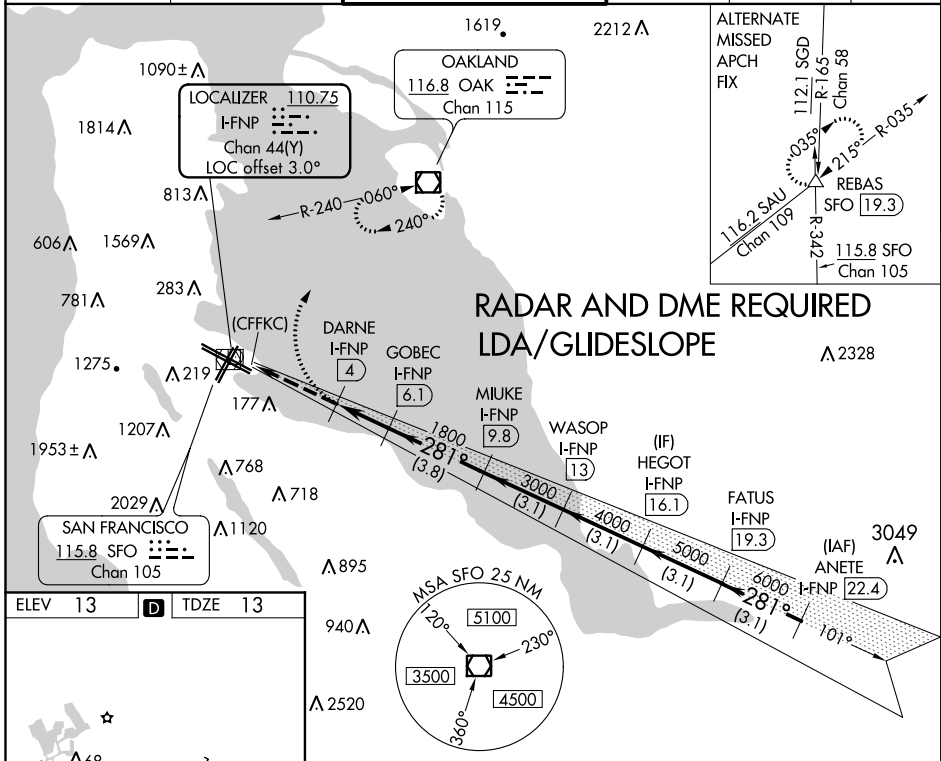
LDA/DME RWY 28R


SAN FRANCISCO INTL (SFO)

NA Inoperative table does not apply. Runway 28L and 28R separated by 750 feet centerline to centerline. Localizer course 1183° right of Rwy 28R threshold. Procedure NA when glideslope not available.
 *If go around executed after passing DARNÉ, go around requires minimum climb of 380 feet per NM to 1800.

ALSF-2

MISSED APPROACH: Climbing right turn to 3000 on heading 030° then direct OAK VOR/DME and hold.

D-ATIS 113.7 115.8 118.85	NORCAL APP CON 134.5 338.2	SAN FRANCISCO TOWER 120.5 269.1	GND CON 121.8	CLNC DEL 118.2	CPDLC
---	--------------------------------------	---	-------------------------	--------------------------	-------



3000 OAK  VGSi and LDA glidepath not coincident (VGSi Angle 3.00/TCH 68).

3000	1140	1800	3000	4000	5000	6000	7000
	(3.4 NM)	(2.1 NM)	(3.8 NM)	(3.1 NM)	(3.1 NM)	(3.1 NM)	(3.1 NM)
	A	B	C	D			
CATEGORY	1140-4 1127 (1200-4)						
*S-LDA/GS	28R						

ANETE I-FNP 22.4, FATUS I-FNP 19.3, HEGOT I-FNP 16.1, MIUKE I-FNP 9.8, GOBEC I-FNP 6.1, DARNÉ I-FNP 4, (CFFKC)

GS 3.00° TCH 55

SW-2, 03 JAN 2019 to 31 JAN 2019

SW-2, 03 JAN 2019 to 31 JAN 2019