

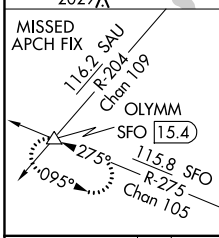
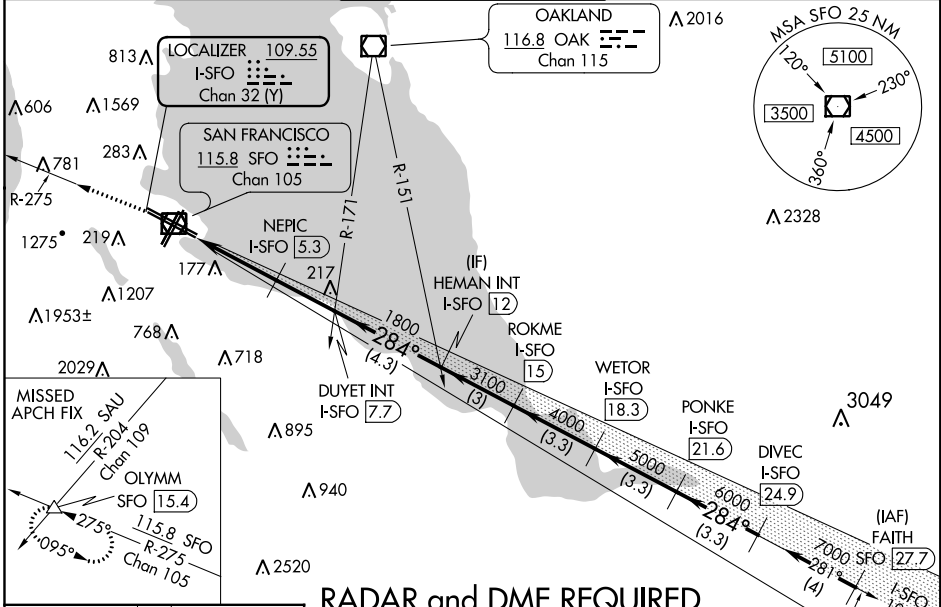
**ILS PRM RWY 28L**  
**(SIMULTANEOUS CLOSE PARALLEL)**  
 SAN FRANCISCO INTL (SFO)

LOC/DME I-SFO <b>109.55</b> Chan 32 (Y)	APP CRS <b>284°</b>	Rwy Idg <b>10275</b> TDZE <b>13</b> Apt Elev <b>13</b>
---	------------------------	--

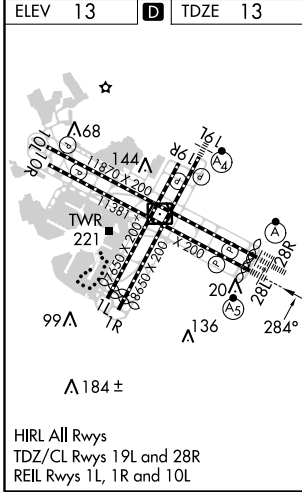
**NA** Rwy 28L and 28R separated by 750 feet centerline to centerline. DME required. Missed approach requires minimum climb of 325 feet per NM to 2100; if unable to meet climb gradient, see ILS or LOC RWY 28L. RVR 1800 authorized with the use of FD or AP or HUD to DA. Simultaneous Close Parallel approach authorized with LDA PRM RWY 28R and RNAV (GPS) PRM X RWY 28R. Procedure NA when glide slope not available. Dual VHF comm required. See additional requirements on AAUP.

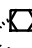
**MALSR**  
  
**MISSED APPROACH:**  
 Climb to 4000 on SFO VOR/DME R-275 to OLYMM INT/SFO 15.4 DME and hold.

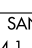
D-ATIS <b>113.7 115.8 118.85</b>	NORCAL APP CON <b>134.5 338.2</b>	SAN FRANCISCO TOWER <b>120.5 269.1 PRM 125.15</b>	GND CON <b>121.8</b>	CLNC DEL <b>118.2</b>	CPDLC
-------------------------------------	--------------------------------------	--	-------------------------	--------------------------	-------



**RADAR and DME REQUIRED**



ALTERNATE MISSED APCH FIX  
**SAN JOSE**  
 SJC 114.1  
 Chan 88  
  
 286°-R-106

**SAN JOSE**  
 114.1 SJC  
 Chan 88  


4000	OLYMM	VGSi and ILS glidepath not coincident (VGSi Angle 2.85/TCH 67).				DIVEC I-SFO 24.9
SFO R-275		WETOR I-SFO 18.3	PONKE I-SFO 21.6			
Use I-SFO DME when on the LOC course.	DUYET INT I-SFO 7.7	HEMAN INT I-SFO 12	ROKME I-SFO 15	284°	7000	
	NEPIC I-SFO 5.3					GS 2.85° TCH 53
	1080	1800	3100	4000	5000	6000
	3.3 NM	2.4 NM	4.3 NM	3 NM	3.3 NM	3.3 NM
CATEGORY	A	B	C	D		
S-ILS 28L	213/24 200 (200-1/2)					

SW-2, 03 JAN 2019 to 31 JAN 2019

SW-2, 03 JAN 2019 to 31 JAN 2019