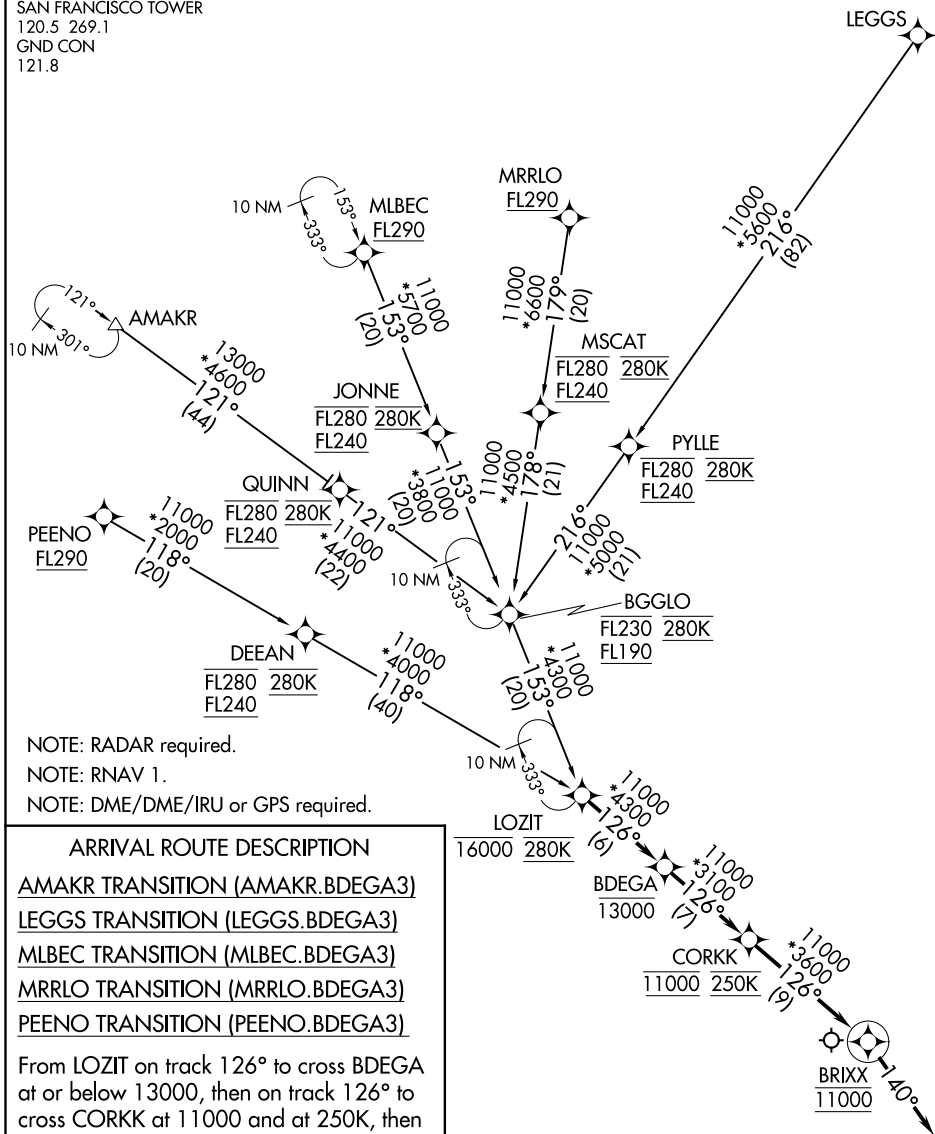


# BDEGA THREE ARRIVAL (RNAV)

AL-375 (FAA)

SAN FRANCISCO INTL (SFO)  
SAN FRANCISCO, CALIFORNIA

OAKLAND CENTER  
125.85 323.0  
NORCAL APP CON  
133.95 317.6  
D-ATIS  
113.7 115.8 118.85  
SAN FRANCISCO TOWER  
120.5 269.1  
GND CON  
121.8



NOTE: RADAR required.  
NOTE: RNAV 1.  
NOTE: DME/DME/IRU or GPS required.

### ARRIVAL ROUTE DESCRIPTION

AMAKR TRANSITION (AMAKR.BDEGA3)

LEGGs TRANSITION (LEGGs.BDEGA3)

MLBEC TRANSITION (MLBEC.BDEGA3)

MRRLO TRANSITION (MRRLO.BDEGA3)

PEENO TRANSITION (PEENO.BDEGA3)

From LOZIT on track 126° to cross BDEGA at or below 13000, then on track 126° to cross CORKK at 11000 and at 250K, then on track 126° to BRIXX, then on track 140° course.

NOTE: Chart not to scale.

# BDEGA THREE ARRIVAL (RNAV)

SW-2, 03 JAN 2019 to 31 JAN 2019

SW-2, 03 JAN 2019 to 31 JAN 2019