

LOC/DME I-PIH <b>110.3</b> Chan 40	APP CRS <b>211°</b>	Rwy Idg TDZE Apt Elev	<b>9060</b> <b>4452</b> <b>4452</b>
--	------------------------	-----------------------------	---

# ILS or LOC RWY 21

POCATELLO RGNL (PIH)

**⚠** Circling NA southeast of Rwy 3-21. For inoperative MALSR, increase S-ILS-21 Cat E visibility to RVR 4000, and S-LOC-21 Cat E visibility to RVR 5000.  
\*\* RVR 1800 authorized with the use of FD or AP or HUD to DA.

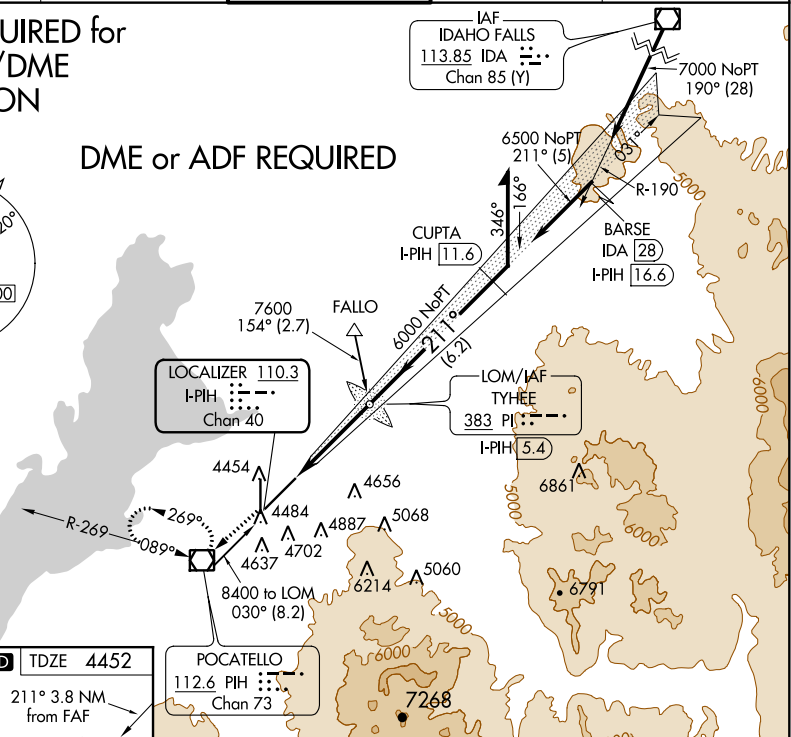
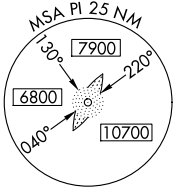


**MISSED APPROACH:** Climb to 7400 direct PIH VOR/DME, continue climb via PIH VOR/DME R-269, then right turn direct PIH VOR/DME and hold.

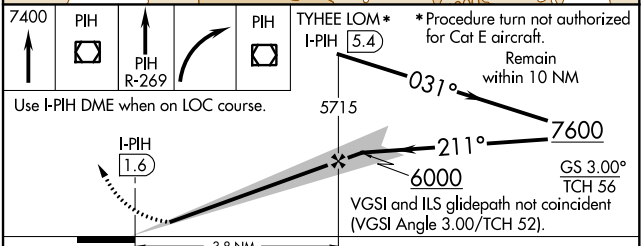
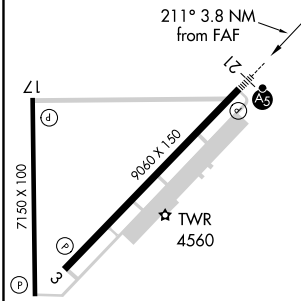
ATIS <b>135.625</b>	SALT LAKE CENTER <b>128.35 239.25</b>	<b>POCATELLO TOWER *</b> <b>119.1 (CTAF) 257.8</b>	GND CON <b>121.9</b>	UNICOM <b>122.95</b>
------------------------	--	---	-------------------------	-------------------------

## DME REQUIRED for IDA VOR/DME TRANSITION

## DME or ADF REQUIRED



ELEV <b>4452</b>	<b>D</b>	TDZE <b>4452</b>
------------------	----------	------------------



CATEGORY	A	B	C	D	E
S-ILS 21	**4652/24 200 (200-½)				
S-LOC 21	4740/24 288 (300-½)		4740/40 288 (300-¾)		
CIRCLING	4820-1 368 (400-1)	4920-1 468 (500-1)	4920-1½ 468 (500-1½)	5020-2	568 (600-2)

NW-1, 03 JAN 2019 to 31 JAN 2019

NW-1, 03 JAN 2019 to 31 JAN 2019