

WAAS CH <b>90529</b> <b>W04A</b>	APP CRS <b>045°</b>	Rwy Idg TDZE Apt Elev	<b>4605</b> <b>2851</b> <b>2872</b>
--	------------------------	-----------------------------	---

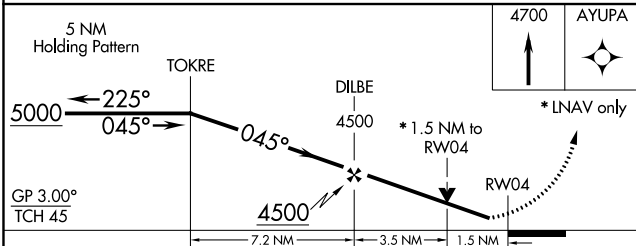
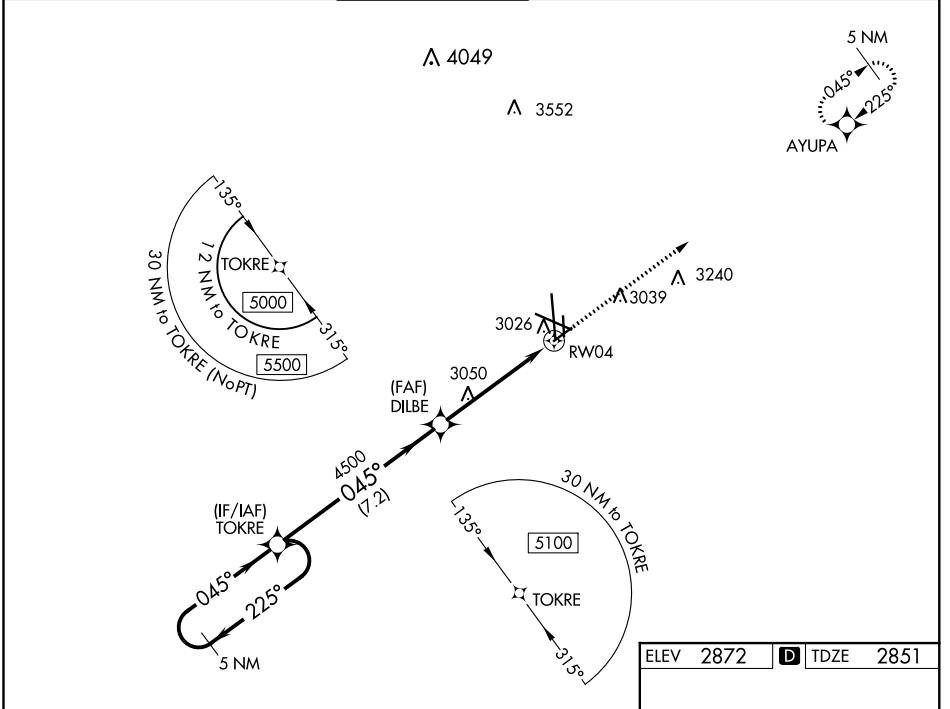
# RNAV (GPS) RWY 4

MIDLAND INTL AIR AND SPACE PORT (MAF)

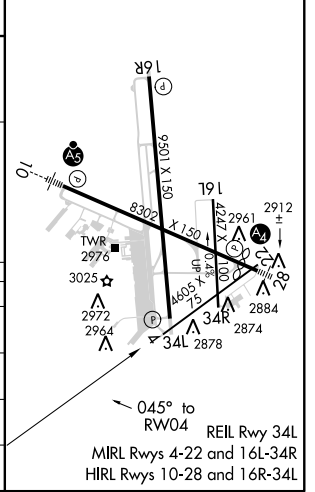
**ASR** For uncompensated Baro-VNAV systems, LNAV/VNAV NA below -11°C (13°F) or above 25°C (77°F). Circling Rwy 16L NA at night. Rwy 4 helicopter visibility reduction below 3/4 SM NA. DME/DME RNP-0.3 NA.

MISSED APPROACH: Climb to 4700 direct AYUPA and hold.

ATIS <b>126.8 235.975</b>	MIDLAND APP CON* <b>124.6 290.4</b>	MIDLAND TOWER* <b>118.7 (CTAF) 273.45</b>	GND CON <b>121.9 348.6</b>	CLNC DEL <b>118.05 317.65</b>	UNICOM <b>122.95</b>
------------------------------	--	--	-------------------------------	----------------------------------	-------------------------



ELEV 2872	<b>D</b> TDZE 2851
-----------	--------------------



CATEGORY	A	B	C	D
LPV DA		3051-3/4	200 (200-3/4)	
LNAV/VNAV DA		3283-1 1/2	432 (500-1 1/2)	
LNAV MDA	3360-1	509 (500-1)	3360-1 3/8	509 (500-1 3/8)
CIRCLING	3440-1	568 (600-1)	3440-1 1/2	3520-2
			568 (600-1 1/2)	648 (700-2)

SC-3, 03 JAN 2019 to 31 JAN 2019

SC-3, 03 JAN 2019 to 31 JAN 2019