

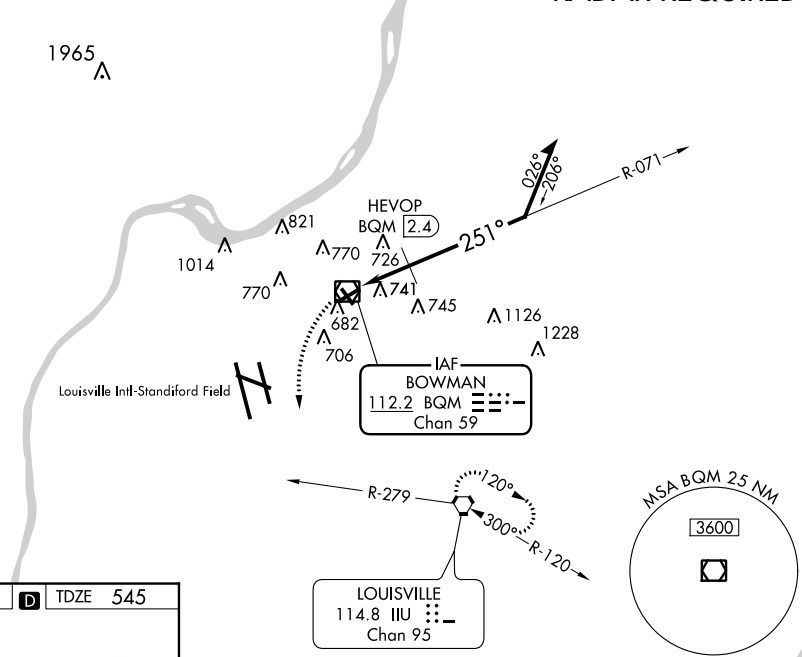
VOR/DME BQM 112.2 Chan 59	APP CRS 251°	Rwy Idg TDZE Apt Elev	3856 545 546
---	------------------------	-----------------------------	---

VOR RWY 24
BOWMAN FIELD (LOU)

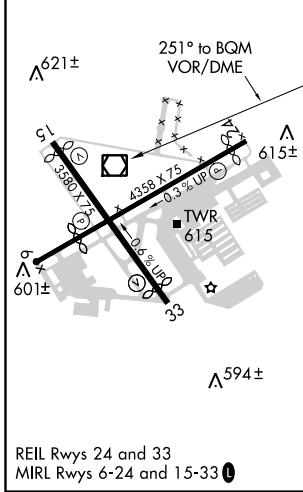
<p>▼ ▲ When local altimeter setting not received, use Louisville Intl-Standford Field altimeter setting. Helicopter visibility reduction below 1 SM NA. Procedure NA at night.</p>	<p>MISSED APPROACH: Climbing left turn to 3000 on heading 150° and IJU VORTAC R-279 to IJU VORTAC and hold.</p>
--	---

ATIS 118.275	LOUISVILLE APP CON 132.075 327.0	BOWMAN TOWER ★ 119.5 (CTAF) 257.625	GND CON 121.8	CLNC DEL 118.9
------------------------	--	--	-------------------------	--------------------------

RADAR REQUIRED



ELEV 546	D	TDZE 545
----------	----------	----------



3000	IIU R-279	IIU	BQM VOR/DME 6000	Remain within 10 NM
<p>VGSI and descent angles not coincident (VGSI Angle 3.50/TCH 27).</p>				
			HEVOP BQM 2.4	2500
			3.57° TCH 45	1360
<p>2.4 NM</p>				

CATEGORY	A	B	C	D
S-24	1360-1 815 (900-1)	1360-1¼ 815 (900-1¼)		NA
C CIRCLING	1360-1¼	814 (900-1¼)		NA
HEVOP FIX MINIMUMS (DME REQUIRED)				
S-24	1000-1	455 (500-1)		NA
C CIRCLING	1060-1 514 (600-1)	1080-1 534 (600-1)		NA

SE-1, 03 JAN 2019 to 31 JAN 2019

SE-1, 03 JAN 2019 to 31 JAN 2019