

WAAS CH 58126 W24A	APP CRS 244°	Rwy Idg TDZE Apt Elev	3856 545 546
--	------------------------	-----------------------------	---

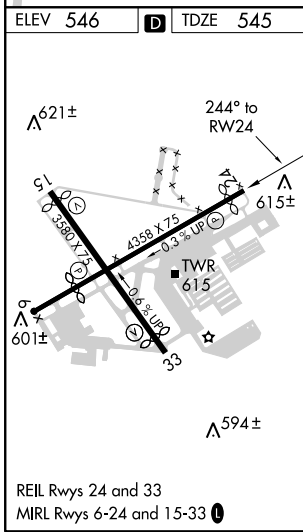
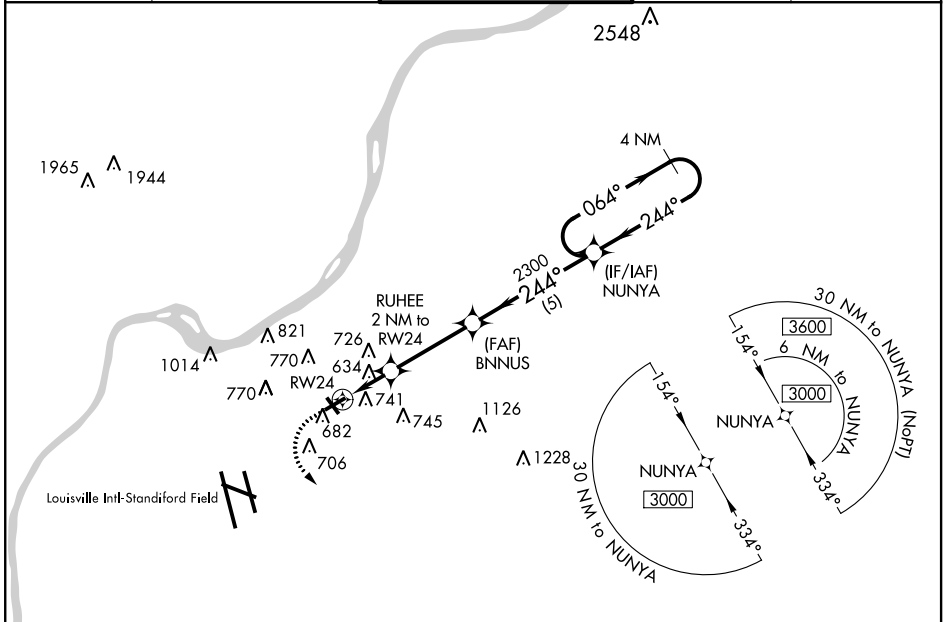
RNAV (GPS) RWY 24

BOWMAN FIELD (LOU)

⚠ DME/DME RNP-0.3 NA. VDP NA with Louisville Intl-Standiford Field altimeter setting. When local altimeter setting not received, use Louisville Intl-Standiford Field altimeter setting. Helicopter visibility reduction below ¼ SM NA. Night landing: Rwy 6, 15, 33 NA.

MISSED APPROACH: Climb to 1100 then climbing left turn to 3000 direct CAANT and hold.

ASOS 118.275	LOUISVILLE APP CON 132.075 327.0	BOWMAN TOWER ★ 119.5 (CTAF) 257.625	GND CON 121.8	CLNC DEL 118.9
------------------------	--	--	-------------------------	--------------------------



ELEV 546	D	TDZE 545				
1100	3000	CAANT	VGSIs and RNAV glidepath not coincident (VGSi Angle 3.50/TCH 27).			
*RNAV only		RUHEE 2 NM to RW24	BNNUS 2300	NUNYA 3000	4 NM Holding Pattern	
RW24		*1.1 NM to RW24	1220*	2300	064° → 3000	GP 3.00° TCH 53
1.1 NM		0.9 NM	3.4 NM	5 NM		
CATEGORY	A	B	C	D		
LPV DA	830-7 $\frac{7}{8}$	285 (300-7 $\frac{7}{8}$)		NA		
LNAV/ VNAV	1025-1 $\frac{1}{8}$	480 (500-1 $\frac{1}{8}$)		NA		
LNAV MDA	1000-1	455 (500-1)		NA		
C CIRCLING	1060-1 514 (600-1)	1080-1 534 (600-1)		NA		

SE-1, 03 JAN 2019 to 31 JAN 2019

SE-1, 03 JAN 2019 to 31 JAN 2019