

LOM LK	APP CRS	Rwy Idg	<b>3238</b>
<b>414</b>	<b>348°</b>	TDZE	<b>546</b>
		Apt Elev	<b>546</b>

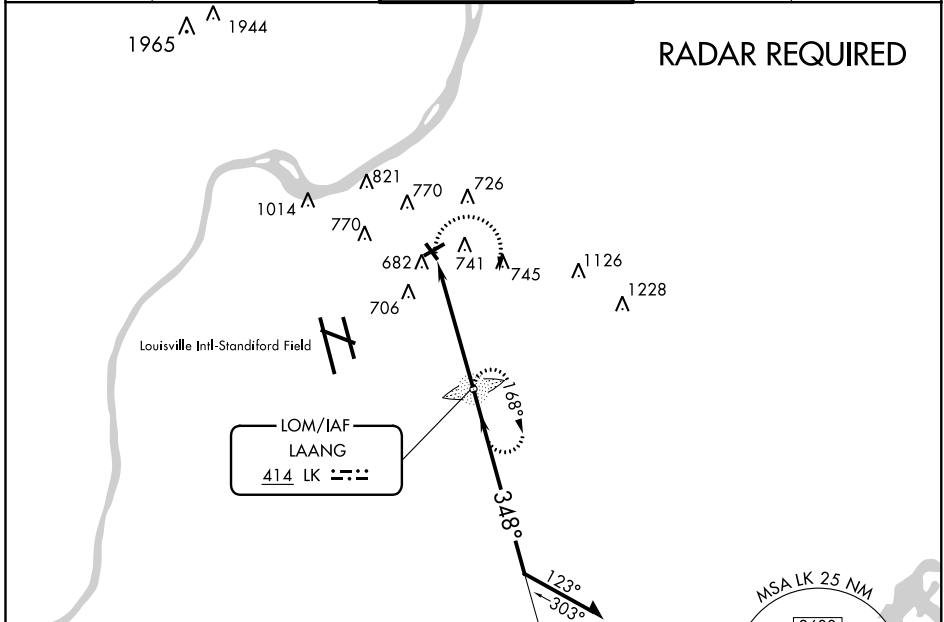
# NDB RWY 33

BOWMAN FIELD (LOU)

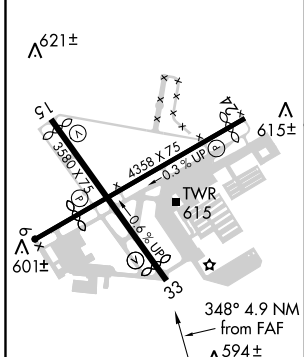
**⚠** Visibility reduction by helicopters NA. When local altimeter setting not received, use Louisville Intl-Standiford Field altimeter setting. When VGSI inop, Circling to Rwy 6 NA at night.

**MISSED APPROACH:** Climbing right turn to 2500 direct LAANG LOM and hold.

ASOS <b>118.275</b>	LOUISVILLE APP CON <b>132.075 327.0</b>	<b>BOWMAN TOWER ★</b> <b>119.5 (CTAF) 257.625</b>	GND CON <b>121.8</b>	CLNC DEL <b>118.9</b>
------------------------	--	--	-------------------------	--------------------------



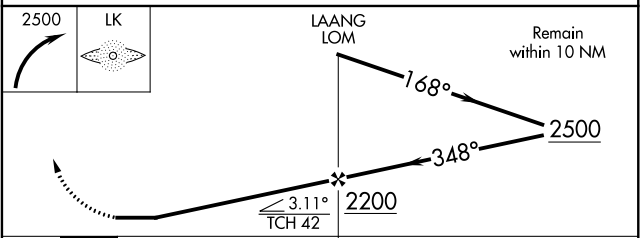
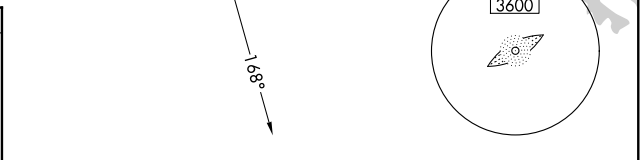
ELEV	<b>546</b>	<b>D</b>	TDZE	<b>546</b>
------	------------	----------	------	------------



REIL Rws 24 and 33  
MIRL Rws 6-24 and 15-33

FAF to MAP 4.9 NM

Knots	60	90	120	150	180
Min:Sec	4:54	3:16	2:27	1:58	1:38



CATEGORY	A	B	C	D
S-33	1160-1	614 (700-1)	NA	
CIRCLING	1160-1	614 (700-1)	NA	

SE-1, 03 JAN 2019 to 31 JAN 2019

SE-1, 03 JAN 2019 to 31 JAN 2019