

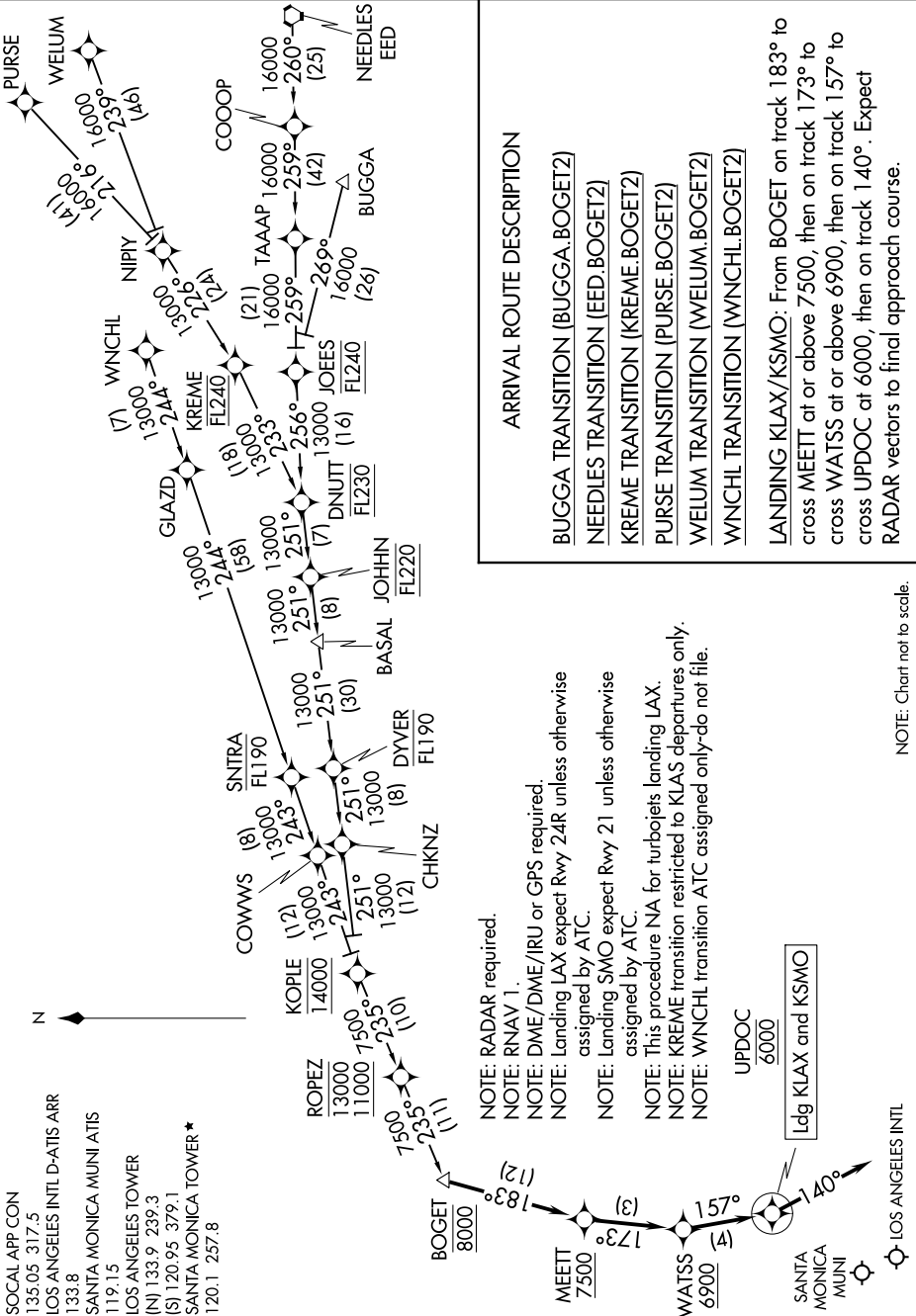
BOGET TWO ARRIVAL (RNAV)

AL-237 (FAA)

LOS ANGELES, CALIFORNIA

SW-3, 03 JAN 2019 to 31 JAN 2019

- SOCAL APP CON
- 135.05 317.5
- LOS ANGELES INTL D-ATIS ARR
- 133.8
- SANTA MONICA MUNI ATIS
- 119.15
- LOS ANGELES TOWER
- (N) 133.9 239.3
- (S) 120.95 379.1
- SANTA MONICA TOWER*
- 120.1 257.8



- NOTE: RADAR required.
- NOTE: RNAV 1.
- NOTE: DME/DME/IRU or GPS required.
- NOTE: Landing LAX expect Rwy 24R unless otherwise assigned by ATC.
- NOTE: Landing SMO expect Rwy 21 unless otherwise assigned by ATC.
- NOTE: This procedure NA for turbojets landing LAX.
- NOTE: KREME transition restricted to KLAS departures only.
- NOTE: WNCNL transition ATC assigned only-do not file.

UPDOC
6000

Ldg KLAS and KSMO

NOTE: Chart not to scale.

ARRIVAL ROUTE DESCRIPTION

- BUGGA TRANSITION (BUGGA.BOGET2)
- NEEDLES TRANSITION (EED.BOGET2)
- KREME TRANSITION (KREME.BOGET2)
- PURSE TRANSITION (PURSE.BOGET2)
- WELUM TRANSITION (WELUM.BOGET2)
- WNCNL TRANSITION (WNCNL.BOGET2)

LANDING KLAS/KSMO: From BOGET on track 183° to cross MEETT at or above 7500, then on track 173° to cross WATSS at or above 6900, then on track 157° to cross UPDOC at 6000, then on track 140°. Expect RADAR vectors to final approach course.

BOGET TWO ARRIVAL (RNAV)

LOS ANGELES, CALIFORNIA

SW-3, 03 JAN 2019 to 31 JAN 2019