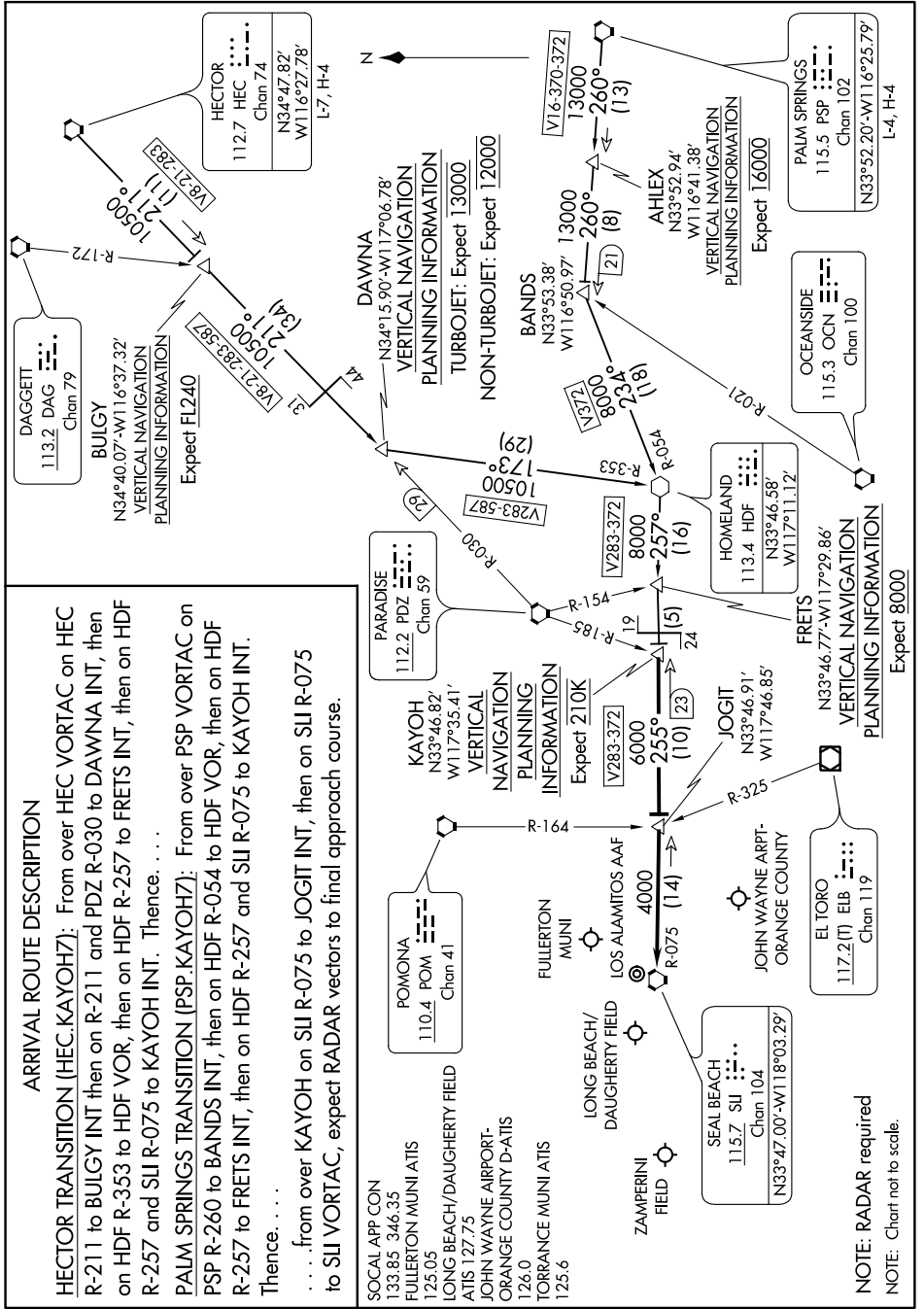


KAYOH SEVEN ARRIVAL

AL-236 (FAA)

LONG BEACH, CALIFORNIA

SW-3, 03 JAN 2019 to 13 JAN 2019



ARRIVAL ROUTE DESCRIPTION

HECTOR TRANSITION (HEC.KAYOH7): From over HEC VORTAC on HEC R-211 to BULGY INT then on R-211 and PDZ R-030 to DAWNA INT, then on HDF R-353 to HDF VOR, then on HDF R-257 to FRETTS INT, then on HDF R-257 and SLI R-075 to KAYOH INT. Thence. . .

PALM SPRINGS TRANSITION (PSP.KAYOH7): From over PSP VORTAC on PSP R-260 to BANDS INT, then on HDF R-054 to HDF VOR, then on HDF R-257 to FRETTS INT, then on HDF R-257 and SLI R-075 to KAYOH INT. Thence. . .

. . . from over KAYOH on SLI R-075 to JOGIT INT, then on SLI R-075 to SLI VORTAC, expect RADAR vectors to final approach course.

- SOCAL APP CON 133.85 346.35
- FULLERTON MUNI ATIS 125.05
- LONG BEACH/DAUGHERTY FIELD ATIS 127.75
- JOHN WAYNE AIRPORT-ORANGE COUNTY D-ATIS 126.0
- TORRANCE MUNI ATIS 125.6
- LONG BEACH/DAUGHERTY FIELD
- ZAMPERINI FIELD
- SEAL BEACH 115.7 SU Chn 104 (N33°47.00'-W118°03.29')
- FULLERTON MUNI
- LOS ALAMITOS AAF
- JOHN WAYNE ARPT-ORANGE COUNTY
- EL TORO 117.2(F) ELB Chn 119 (N33°46.77'-W117°29.86')
- FRETTS 113.4 HDF Chn 100 (N33°46.58'-W117°11.12')
- HOMELAND 113.4 HDF Chn 100 (N33°46.58'-W117°11.12')
- AWAY 116.5 AWY Chn 102 (N33°52.20'-W116°25.79')
- PALM SPRINGS 115.5 PSP Chn 102 (N33°52.20'-W116°25.79')

NOTE: RADAR required
NOTE: Chart not to scale.

SW-3, 03 JAN 2019 to 31 JAN 2019

KAYOH SEVEN ARRIVAL

LONG BEACH, CALIFORNIA