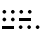
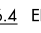


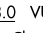
# TRUAX SEVEN DEPARTURE

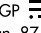
D-ATIS  
124.6  
CLNC DEL  
125.45  
CPDLC  
GND CON  
121.9  
HOBBY TOWER  
118.7 256.9  
HOUSTON DEP CON  
127.125 269.075

**TOP ALTITUDE:  
16000**

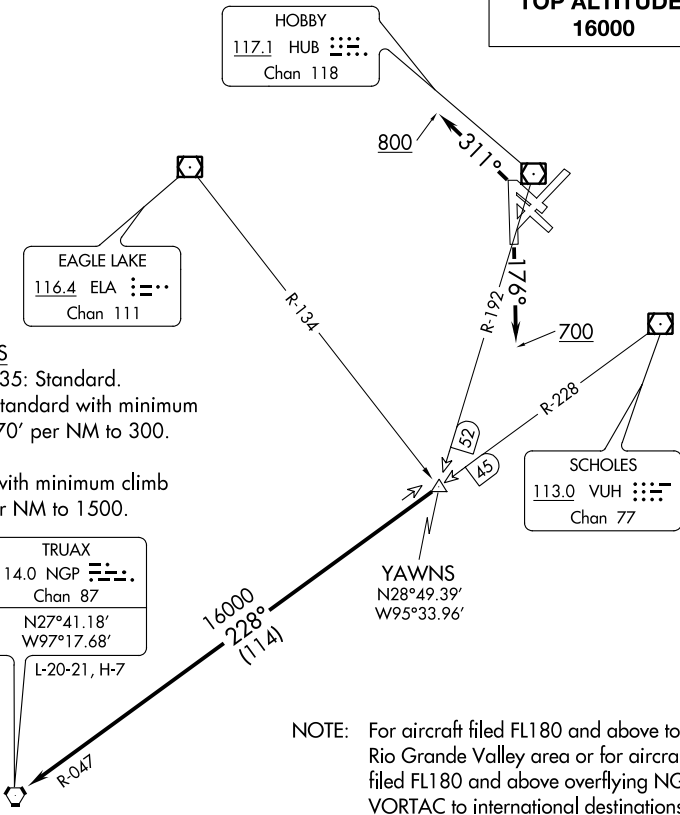
HOBBY  
117.1 HUB   
Chan 118

EAGLE LAKE  
116.4 ELA   
Chan 111

SCHOLES  
113.0 VUH   
Chan 77

TRUAX  
114.0 NGP   
Chan 87  
N27°41.18'  
W97°17.68'  
L-20-21, H-7

YAWNS  
N28°49.39'  
W95°33.96'



### TAKEOFF MINIMUMS

Rwys 13L/R, 31L/R, 35: Standard.  
Rwy 4: 300-1 or standard with minimum climb of 270' per NM to 300.  
Rwy 17: 300-1.  
Rwy 22: Standard with minimum climb of 290' per NM to 1500.

NOTE: For aircraft filed FL180 and above to Rio Grande Valley area or for aircraft filed FL180 and above overflying NGP VORTAC to international destinations.  
NOTE: RADAR required.

NOTE: Chart not to scale.

### DEPARTURE ROUTE DESCRIPTION

**TAKEOFF RWYS 4, 13L/13R, 22, 35:** Climb on assigned heading for RADAR vectors to YAWNS INT, maintain 16000. Expect filed altitude 10 minutes after departure, thence. . . .  
**TAKEOFF RWY 17:** Climb heading 176° to 700 before turning, then climb on assigned heading for RADAR vectors to YAWNS INT, maintain 16000. Expect filed altitude 10 minutes after departure, thence. . . .  
**TAKEOFF RWYS 31L/31R:** Climb heading 311° to 800 before turning, then climb on assigned heading for RADAR vectors to YAWNS INT, maintain 16000. Expect filed altitude 10 minutes after departure, thence. . . .  
. . . .on VUH R-228 and NGP R-047 to NGP VORTAC.