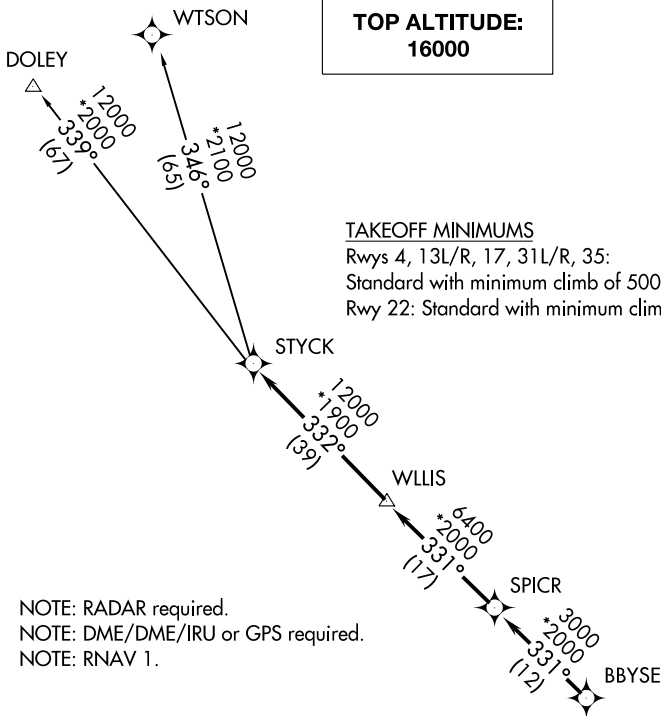


STYCK SIX DEPARTURE (RNAV)

**TOP ALTITUDE:
16000**



D-ATIS 124.6
 CLNC DEL 125.45
 CPDLC
 GND CON 121.9
 HOBBY TOWER 118.7 256.9
 HOUSTON DEP CON 132.25 285.425

TAKEOFF MINIMUMS

Rwys 4, 13L/R, 17, 31L/R, 35:

Standard with minimum climb of 500' per NM to 560.

Rwy 22: Standard with minimum climb of 500' per NM to 700.

NOTE: RADAR required.
 NOTE: DME/DME/IRU or GPS required.
 NOTE: RNAV 1.

DEPARTURE ROUTE DESCRIPTION

TAKEOFF RWY 4: Climb heading 041° to 560 for RADAR vectors to BBYSE, thence. . . .

TAKEOFF RWYS 13L/R: Climb heading 131° to 560 for RADAR vectors to BBYSE, thence. . . .

TAKEOFF RWY 17: Climb heading 176° to 560 for RADAR vectors to BBYSE, thence. . . .

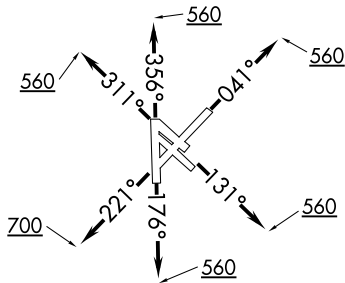
TAKEOFF RWY 22: Climb heading 221° to 700 for RADAR vectors to BBYSE, thence. . . .

TAKEOFF RWYS 31L/R: Climb heading 311° to 560 for RADAR vectors to BBYSE, thence. . . .

TAKEOFF RWY 35: Climb heading 356° to 560 for RADAR vectors to BBYSE, thence. . . .

. . . . on track 331° to SPICR, then on track 331° to WLLIS, then on track 332° to STYCK, then on (transition). Maintain 16000 or as assigned by ATC. Expect filed altitude 10 minutes after departure.

DOLEY TRANSITION (STYCK6.DOLEY)
WTSON TRANSITION (STYCK6.WTSON)



NOTE: Chart not to scale.

STYCK SIX DEPARTURE (RNAV)