

LEONA THREE DEPARTURE

AL-198 (FAA)

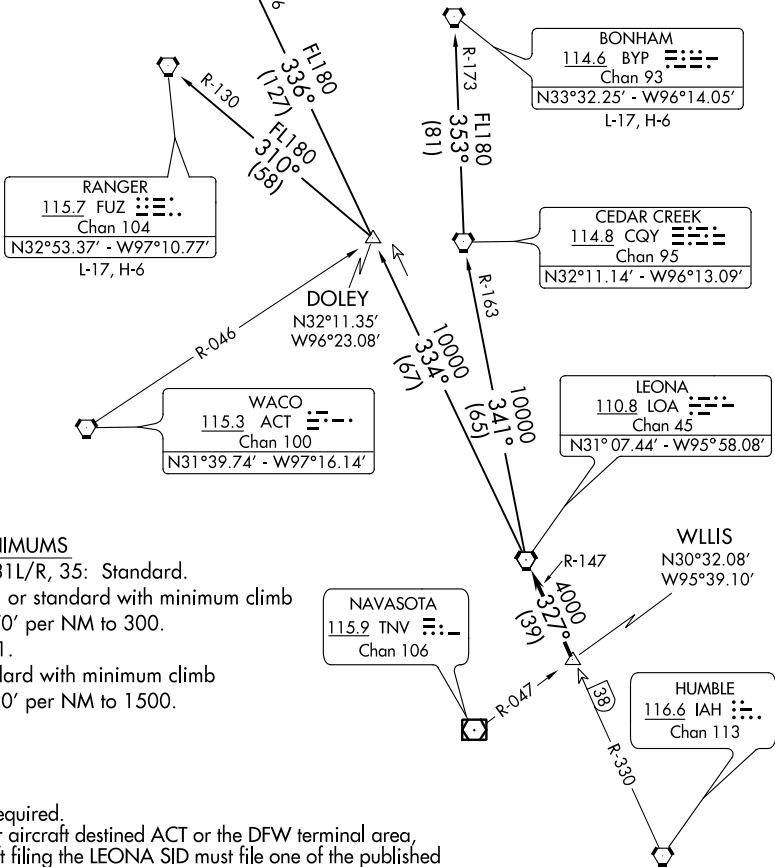
WILLIAM P HOBBY (HOU)
HOUSTON, TEXAS

TOP ALTITUDE: 16000

ARDMORE
116.7 ADM
Chan 114
N34°12.69' - W97°10.10'
L-17, H-6

TULSA
114.4 TUL
Chan 91
N36°11.78' - W95°47.29'

D-ATIS
124.6
CLNC DEL
125.45
CPDLC
HOUSTON DEP CON
132.25 285.425
GND CON
121.9
HOBBY TOWER
118.7 256.9



TAKEOFF MINIMUMS

- Rwys 13L/R, 31L/R, 35: Standard.
- Rwy 4: 300-1 or standard with minimum climb of 270' per NM to 300.
- Rwy 17: 300-1.
- Rwy 22: Standard with minimum climb of 290' per NM to 1500.

NOTE: RADAR required.

NOTE: Except for aircraft destined ACT or the DFW terminal area, all aircraft filing the LEONA SID must file one of the published transitions via FUZ (LOA3.FUZ) ADM (LOA3.ADM) or BYP (LOA3.BYP).

NOTE: RANGER TRANSITION: For aircraft overflying west/northwest of the DFW terminal area FL240 and above.

NOTE: ARDMORE TRANSITION: For aircraft overflying north/northwest of the DFW terminal area FL240 and above.

NOTE: BONHAM TRANSITION: For aircraft overflying/landing TUL VORTAC FL240 and above.

NOTE: Chart not to scale.

(NARRATIVE ON FOLLOWING PAGE)

LEONA THREE DEPARTURE (LOA3.LOA) 22JUN17

HOUSTON, TEXAS
WILLIAM P HOBBY (HOU)

SC-5, 03 JAN 2019 to 31 JAN 2019

SC-5, 03 JAN 2019 to 31 JAN 2019