

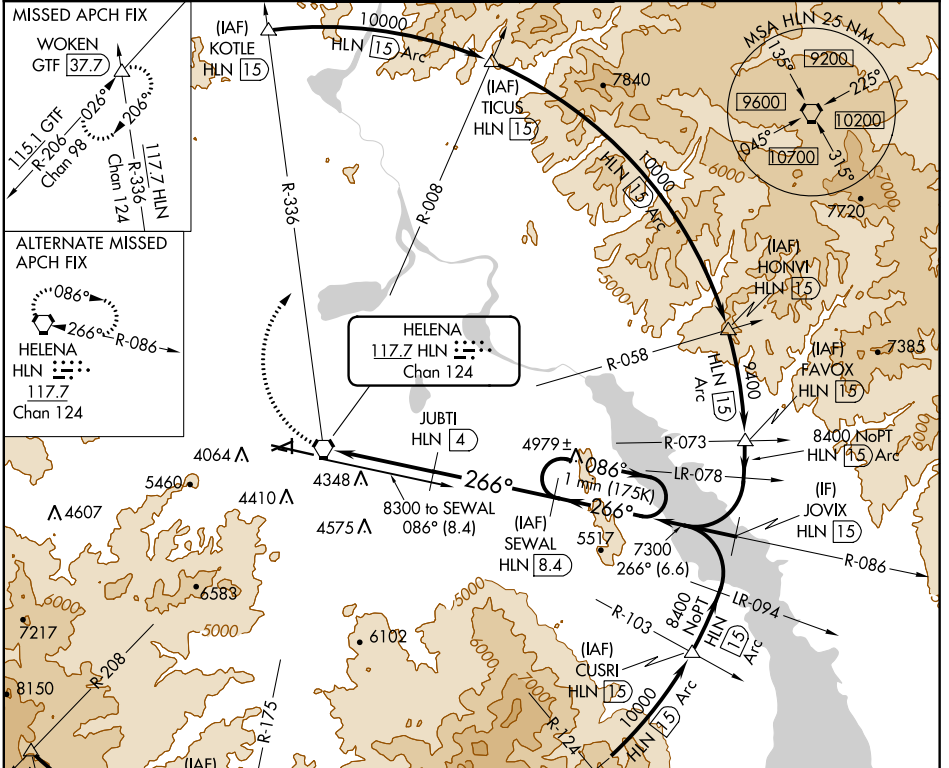
VORTAC HLN 117.7 Chan 124	APP CRS 266°	Rwy Idg TDZE Apt Elev 3877	N/A N/A 3877
--	------------------------	---	--------------------

VOR/DME-B HELENA RGNL (HLN)

⚠ Circling NA for Cat D south of Rwy 9-27.
⚠ DME Arc to final approach course required for turbojet aircraft.
❄ -21°C Holding at SEWAL authorized for Cat A and B aircraft only.

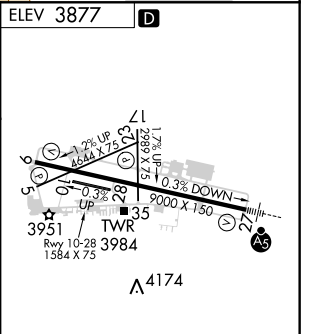
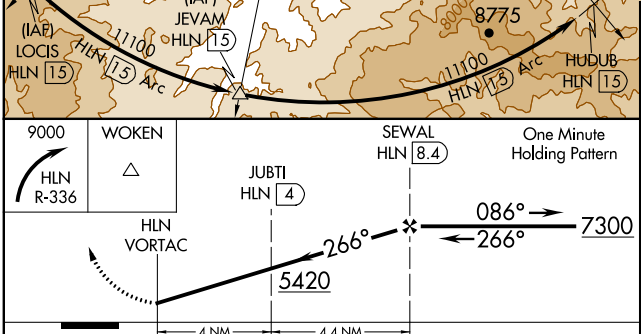
MISSED APPROACH: Climbing right turn to 9000 on HLN VORTAC R-336 to WOKEN INT/GTF 37.7 DME and hold.

ATIS 120.4	HELENA APP CON * 119.5 229.4	HELENA TOWER * 118.3 (CTAF) 0 257.8	GND CON 121.9	UNICOM 122.95
----------------------	--	---	-------------------------	-------------------------



MISSED APCH FIX
WOKEN GTF 37.7
115.1 GTF R-206 Int Chan 98
117.7 HLN R-336 Chan 124

ALTERNATE MISSED APCH FIX
HELENA HLN 117.7 Chan 124



CATEGORY	A	B	C	D
CIRCLING	4760-1¼ 883 (900-1¼)		4760-2¾ 883 (900-2¾)	4760-3 883 (900-3)

REIL Rwy 9, 17 and 35
 MIRL Rws 5-23 and 17-35
 HIRL Rwy 9-27

NW-1, 03 JAN 2019 to 31 JAN 2019

NW-1, 03 JAN 2019 to 31 JAN 2019