

APP CRS 087°	Rwy Idg 9000
	TDZE 3864
	Apt Elev 3877

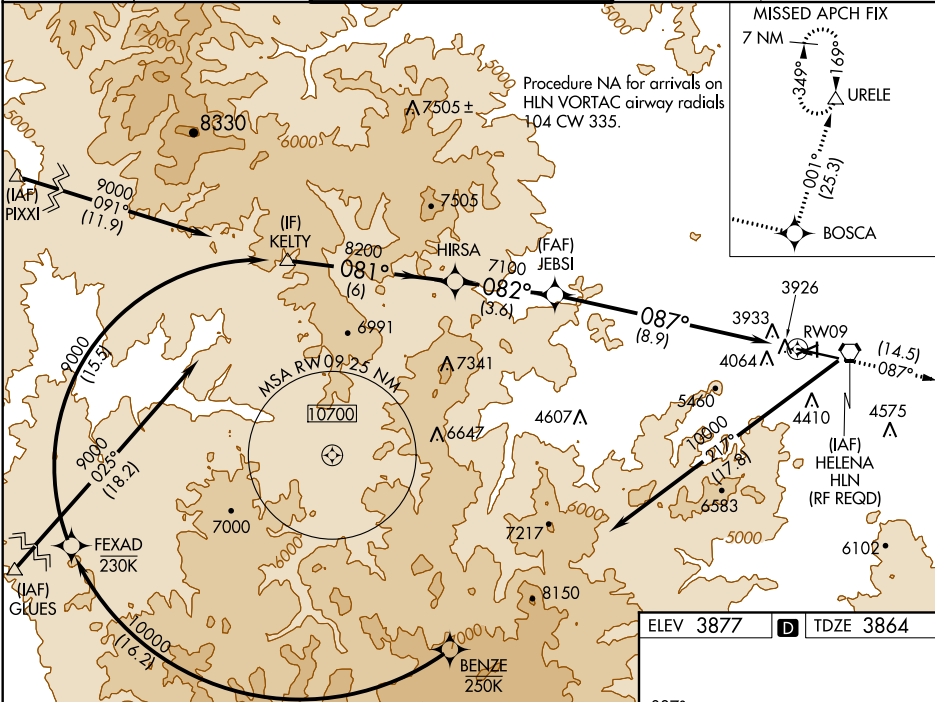
RNAV (RNP) Z RWY 9

HELENA RGNL (HLN)

⚠ GPS required. For uncompensated Baro-VNAV systems, procedure NA below -22°C (-7°F) or above 54°C (130°F). When VGSI inoperative, procedure NA at night.
❄ -21°C
 *Missed approach requires minimum climb of 260' per NM to 4300.

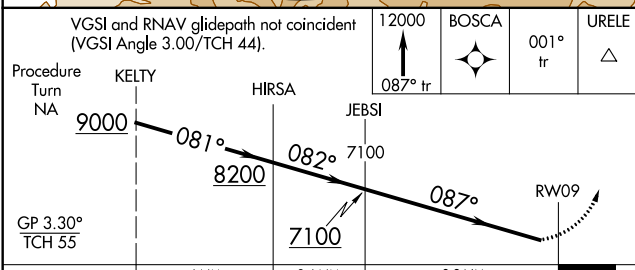
MISSED APPROACH: Climb to 12000 via 087° track to BOSCA and via 001° track to URELE and hold, continue climb-in-hold to 12000.

ATIS 120.4	HELENA APP CON* 119.5 229.4	HELENA TOWER* 118.3 (CTAF) 257.8	GND CON 121.9	UNICOM 122.95
----------------------	---------------------------------------	--	-------------------------	-------------------------

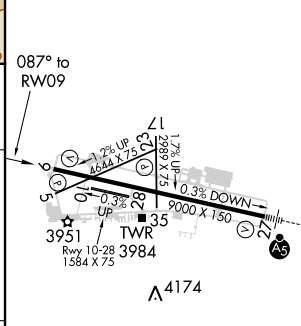


NW-1, 03 JAN 2019 to 31 JAN 2019

NW-1, 03 JAN 2019 to 31 JAN 2019



ELEV 3877	TDZE 3864
-----------	-----------



CATEGORY	A	B	C	D
RNP 0.11 DA*	4220-1	356 (400-1)		NA
RNP 0.17 DA	4258-1¼	394 (400-1¼)		NA
RNP 0.30 DA	4353-1½	489 (500-1½)		NA

AUTHORIZATION REQUIRED

REIL Rwy 9, 17 and 35
 MIRL Rws 5-23 and 17-35
 HIRL Rwy 9-27