


RNAV (RNP) Z RWY 27

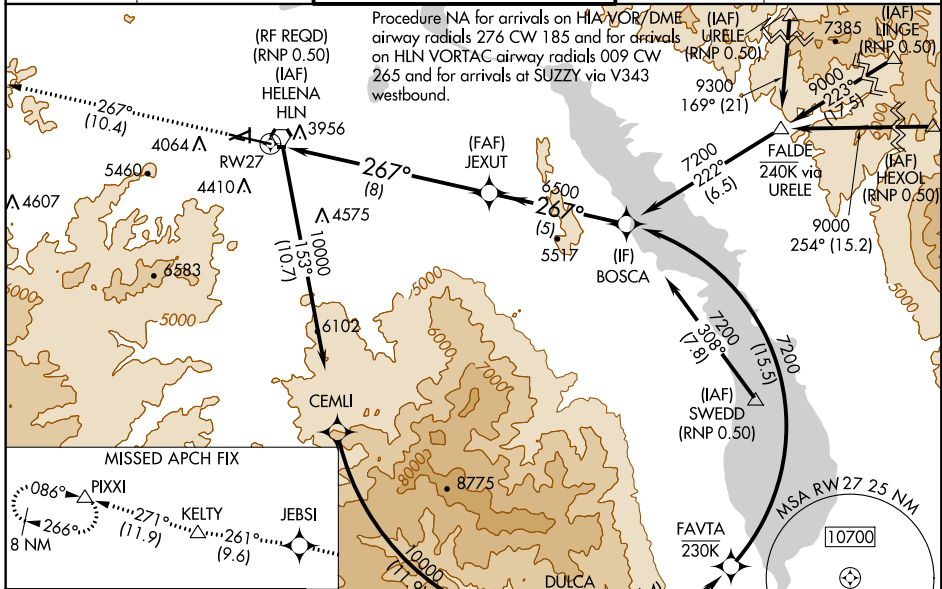
HELENA RGNL (HLN)

APP CRS 267°	Rwy Idg 9000
	TDZE 3852
	Apt Elev 3877

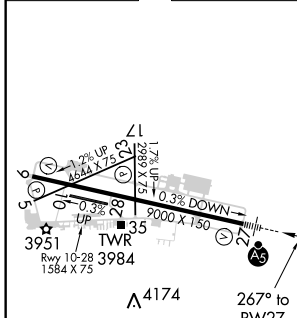
GPS required. For uncompensated Baro-VNAV systems, procedure NA below -22°C (-7°F) or above 41°C (105°F). *Missed approach requires minimum climb of 295 feet per NM to 7900. #Missed approach requires minimum climb of 290 feet per NM to 7300. †Missed approach requires minimum climb of 405 feet per NM to 6300. For inoperative MALSR, increase RNP 0.18* visibility to 1, RNP 0.22# visibility to 1½, and RNP 0.30† visibility to 1½. Inoperative table does not apply to RNP 0.30.

MALSR

MISSED APPROACH: Climb to 13000 via 267° track to JEBSI, and via 261° track to KELTY, and via 271° track to PIXXI and hold, continue climb-in-hold to 13000.

ATIS 120.4	HELENA APP CON * 119.5 229.4	HELENA TOWER * 118.3 (CTAF) 257.8	GND CON 121.9	UNICOM 122.95
----------------------	--	---	-------------------------	-------------------------



ELEV 3877	D	TDZE 3852
-----------	----------	-----------



13000	JEBSI	261° tr	KELTY	VGSi and RNAV glidepath not coincident (VGSi Angle 3.00/TCH 46). BOSCA Procedure Turn NA
267° tr				GP 3.00° TCH 55

CATEGORY	A	B	C	D
RNP 0.18 DA*		4119-½	267 (300-½)	
RNP 0.22 DA#		4212-¾	360 (400-¾)	
RNP 0.30 DA†		4287-1	435 (500-1)	
RNP 0.30 DA		4863-4	1011 (1000-4)	

REIL Rwy 9, 17 and 35
 MIRL Rws 5-23 and 17-35
 HIRL Rwy 9-27

AUTHORIZATION REQUIRED

NW-1, 03 JAN 2019 to 31 JAN 2019

NW-1, 03 JAN 2019 to 31 JAN 2019