

APP CRS 267°	Rwy Idg 9000
	TDZE 3852
	Apt Elev 3877

RNAV (RNP) Y RWY 27

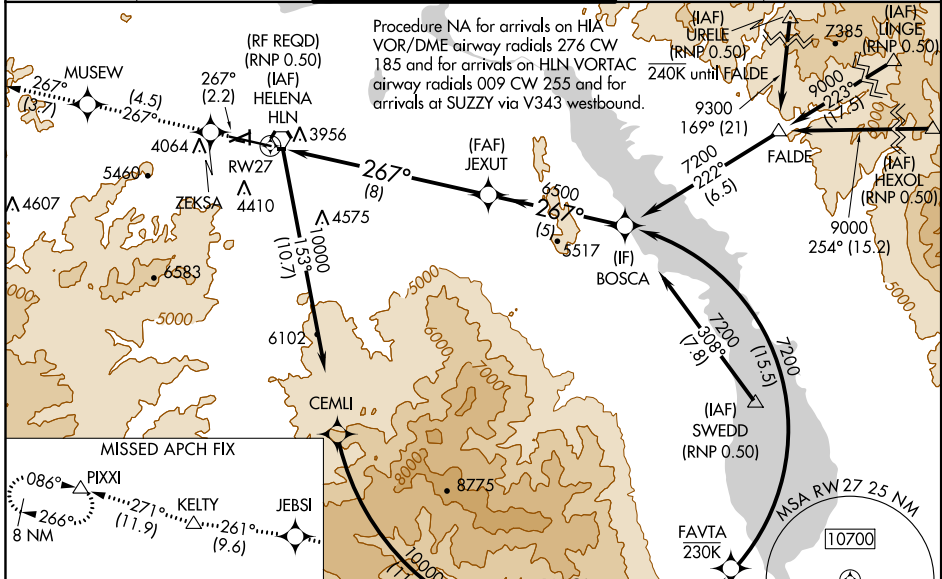
HELENA RGNL (HLN)

GPS required. For uncompensated Baro-VNAV systems, procedure NA below -22°C (-7°F) or above 41°C (105°F). For inoperative MALS, increase RNP 0.22* visibility to 1, and RNP 0.30# visibility to 1½. Missed approach requires RNP less than 1.0. *Missed approach requires minimum climb of 290 feet per NM to 7700; if unable, see RNAV (RNP) Z RWY 27. #Missed approach requires minimum climb of 270 feet per NM to 7600; if unable, see RNAV (RNP) Z RWY 27.

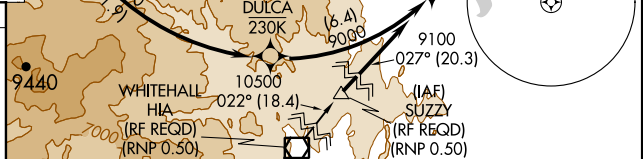
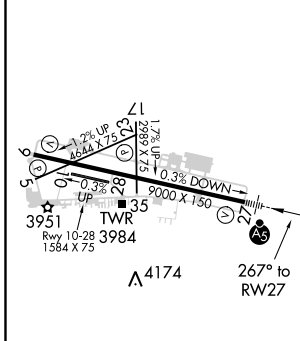
MALS

MISSED APPROACH: Climb to 13000 on track 267° to ZEKSAs, then on track 267° to MUSEW, then on track 267° to JEBLSI, then on track 261° to KELTY, then on track 271° track to PIXXI and hold, continue climb-in-hold to 13000.

ATIS 120.4	HELENA APP CON * 119.5 229.4	HELENA TOWER * 118.3 (CTAF) 0 257.8	GND CON 121.9	UNICOM 122.95
----------------------	--	---	-------------------------	-------------------------



ELEV 3877	D	TDZE 3852
-----------	----------	-----------



13000	ZEKSAs	MUSEW	JEXUT	BOSCA
tr 267°		tr 267°	6500	7200
VGSi and RNAV glidepath not coincident (VGSi Angle 3.00/TCH 46).				
RWY 27				
GP 3.00° TCH 55				

CATEGORY	A	B	C	D
RNP 0.22 DA*		4140-½	288 (300-½)	
RNP 0.30 DA#		4294-1	442 (500-1)	

AUTHORIZATION REQUIRED