

LOC I- HLN	APP CRS 087°	Rwy ldg TDZE N/A	N/A
110.1		Apt Elev 3877	3877

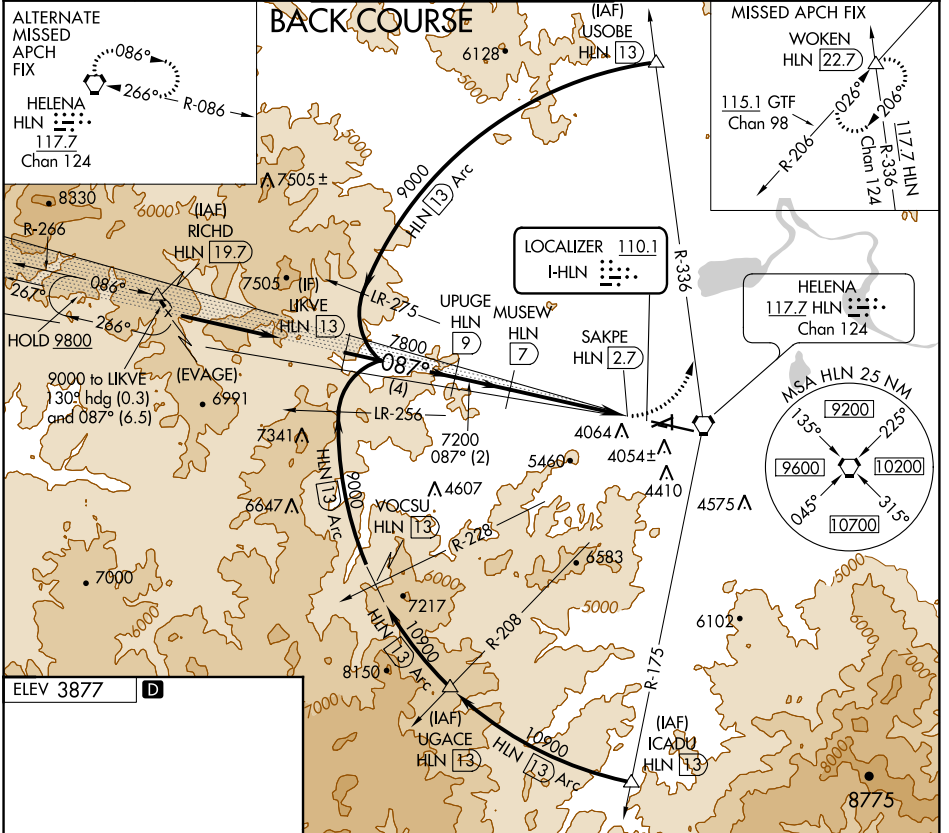
LOC/DME BC-C

HELENA RGNL (HLN)

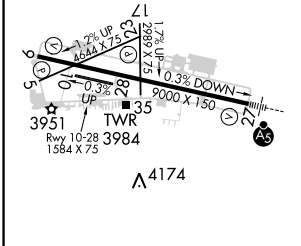
⚠ Circling to Rwy 5, 35 NA at night. When local altimeter setting not received, procedure NA. Visibility reduction by helicopters NA. DME from HLN VORTAC simultaneous reception of I-**HLN** and HLN DME required. When VGSI inop, Circling to Rwy 9, 23 NA at night.

MISSED APPROACH: Climbing left turn to 9300 on HLN VORTAC R-336 to WOKEN INT and hold.

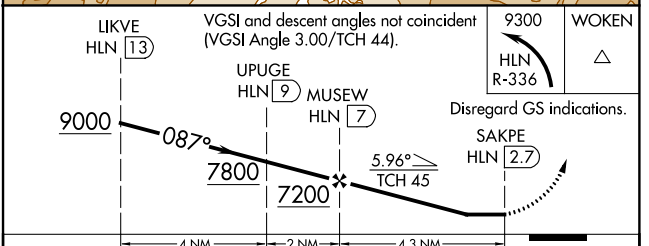
ATIS 120.4	HELENA APP CON* 119.5 229.4	HELENA TOWER* 118.3 (CTAF) 257.8	GND CON 121.9	UNICOM 122.95
-------------------	------------------------------------	---	----------------------	----------------------



ELEV 3877 **D**



REIL Rwy 9, 17 and 35 **Ⓛ**
 MIRL Rwys 5-23 and 17-35 **Ⓛ**
 HIRL Rwy 9-27 **Ⓛ**



CATEGORY	A	B	C	D
CIRCLING	5140-1¼ 1263 (1300-1¼)	5140-1½ 1263 (1300-1½)	5140-3 1263 (1300-3)	NA

NW-1, 03 JAN 2019 to 31 JAN 2019

NW-1, 03 JAN 2019 to 31 JAN 2019