


LOC I-HLN	APP CRS	Rwy Idg	9000
110.1	267°	TDZE	3852
		Apt Elev	3877

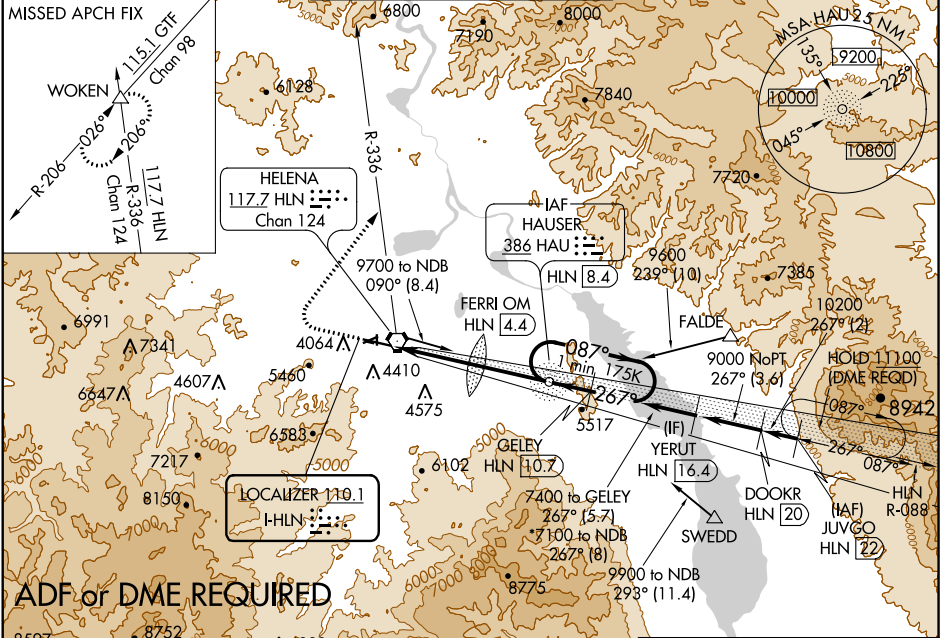
ILS or LOC Y RWY 27

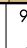

HELENA RGNL (HLN)

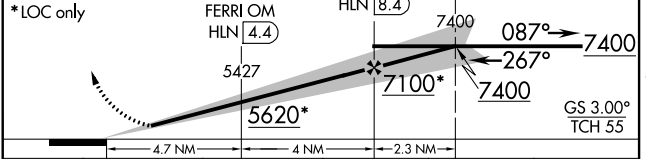
⚠ Inoperative table does not apply to S-LOC 27 all Cats. For inoperative MALSR, increase S-ILS 27 all Cats visibility to 1 1/8 miles, FERRI FIX minimums: S-LOC 27 Cat C, D and E visibility to 2 miles. Holding at HAU NDB authorized for Category A and B aircraft only. Circling NA south of Rwy 9-27 for Cats D and E. Circling to Rwy 5, 23, 35 NA at night. DME from HLN VORTAC, simultaneous reception of I-HLN and HLN DME required.

MALSR  MISSED APPROACH: Climb to 4700 then climbing right turn to 9000 via heading 021° and HLN VORTAC R-336 to WOKEN INT and hold, continue climb-in-hold to 9000.

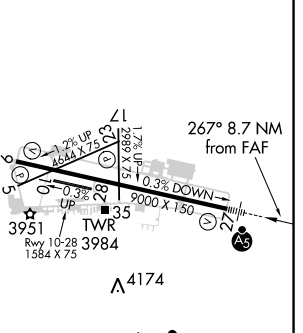
ATIS	HELENA APP CON *	HELENA TOWER *	GND CON	UNICOM
120.4	119.5 229.4	118.3 (CTAF) 257.8	121.9	122.95



4700	9000	WOKEN	VGSI and ILS glidepath not coincident (VGSI Angle 3.00/TCH 46).
		HLN R-336	One Minute Holding Pattern
*LOC only	FERRI OM HLN (4.4)	HAU NDB HLN (8.4)	GELEY HLN (10.7)



ELEV	3877	TDZE	3852
------	-------------	------	-------------



CATEGORY	A	B	C	D	E
S-ILS 27	4409-1 3/8		557 (600-1 1/8)		
S-LOC 27	5620-1 1/4 1768 (1800-1 1/4)	5620-1 1/2 1768 (1800-1 1/2)	5620-3	1768 (1800-3)	
CIRCLING	5620-1 1/4 1743 (1800-1 1/4)	5620-1 1/2 1743 (1800-1 1/2)	5620-3	1743 (1800-3)	
FERRI FIX MINIMUMS*					
S-LOC 27	4580-1/2	728 (800-1/2)	4580-1 5/8	728 (800-1 5/8)	
CIRCLING	4640-1	763 (800-1)	4740-2 1/2 863 (900-2 1/2)	4740-2 3/4 863 (900-2 3/4)	4940-3 1063 (1100-3)

REIL Rwy 9, 17 and 35 **⓪**
MIRL Rwys 5-23 and 17-35 **⓪**
HIRL Rwy 9-27 **⓪**

FAF to MAP 8.7 NM

Knots	60	90	120	150	180
Min:Sec	8:42	5:48	4:21	3:29	2:54

NW-1, 03 JAN 2019 to 31 JAN 2019

NW-1, 03 JAN 2019 to 31 JAN 2019