

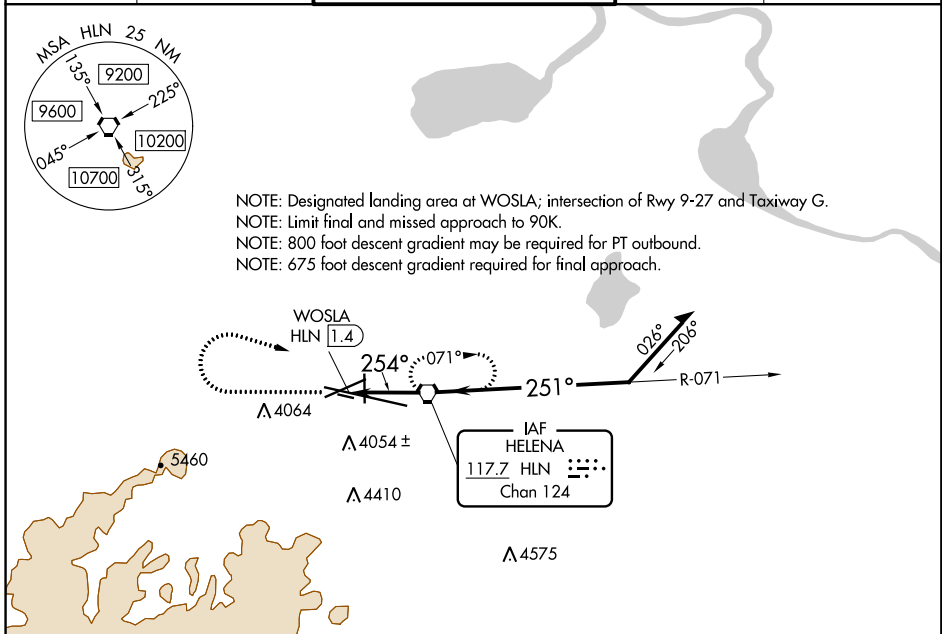
VORTAC HLN 117.7 Chan 124	APP CRS 254°	Rwy Idg TDZE Apt Elev N/A 3846 3877
---	------------------------	---

COPTER VOR 254°

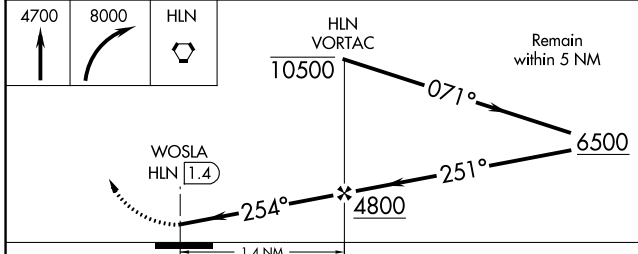
HELENA RGNL (HLN)

<p>NA When local altimeter setting not received, procedure NA.</p> <p>-21°C</p>	<p>MISSED APPROACH: Climb to 4700 then climbing right turn to 8000 direct HLN VORTAC and hold, continue climb-in-hold to 8000.</p>
---	--

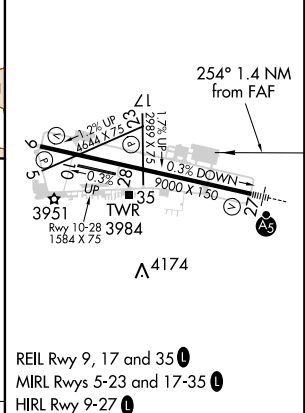
ATIS 120.4	HELENA APP CON * 119.5 229.4	HELENA TOWER * 118.3 (CTAF) 257.8	GND CON 121.9	UNICOM 122.95
----------------------	--	---	-------------------------	-------------------------



NOTE: Designated landing area at WOSLA; intersection of Rwy 9-27 and Taxiway G.
 NOTE: Limit final and missed approach to 90K.
 NOTE: 800 foot descent gradient may be required for PT outbound.
 NOTE: 675 foot descent gradient required for final approach.



ELEV 3877	TDZE 3846
-----------	-----------



FAF to MAP 1.4 NM					
Knots	45	60	75	90	105
Min:Sec	1:53	1:24	1:07	:57	:48

CATEGORY	COPTER
H-254	4320-½ 474 (500-½)

NW-1, 03 JAN 2019 to 31 JAN 2019

NW-1, 03 JAN 2019 to 31 JAN 2019