

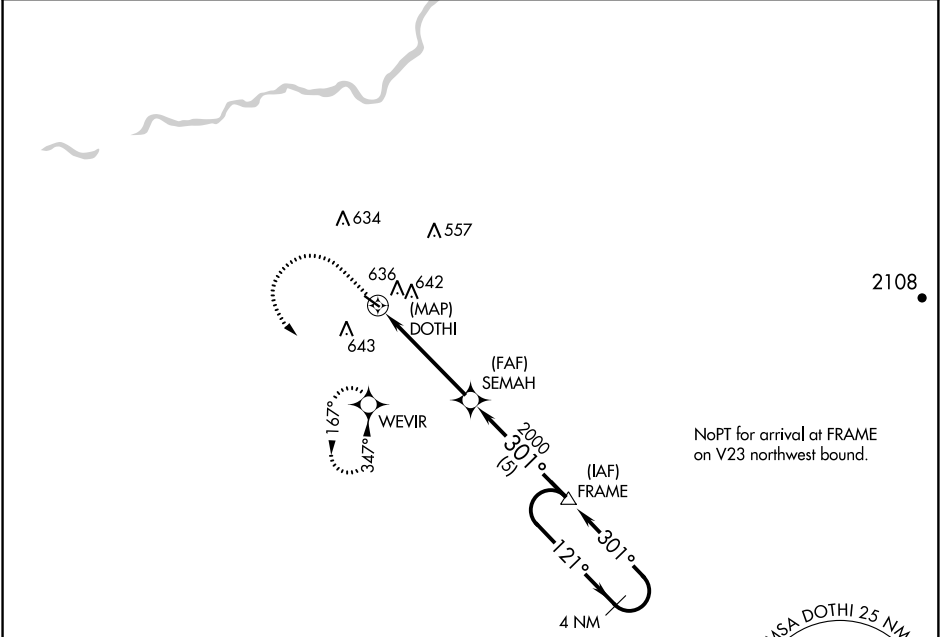
APP CRS	Rwy Idg	3089
301°	TDZE	280
	Apt Elev	280

GPS RWY 30

FRESNO CHANDLER EXECUTIVE (FCH)

	If local altimeter setting not received, use Fresno Yosemite Intl altimeter setting and increase all MDAs 20 feet. Helicopter visibility reduction below 3/4 SM NA.	MISSED APPROACH: Climb to 1000 then climbing left turn to 2000 direct WEVIR WP and hold.

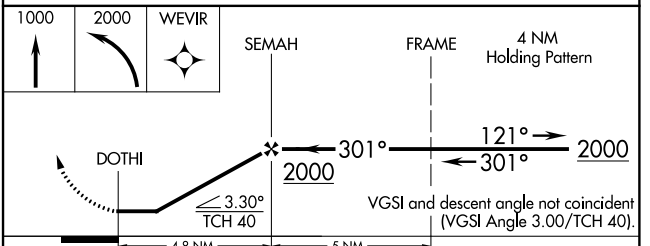
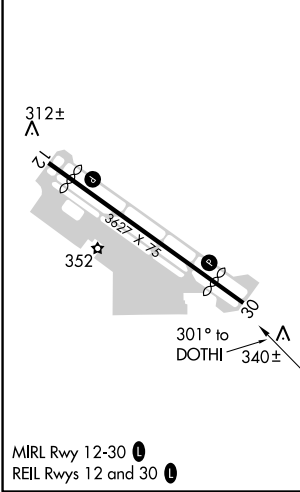
AWOS-3 135.225	FRESNO APP CON 119.0 323.25	UNICOM 123.0 (CTAF) 0
--------------------------	---------------------------------------	---------------------------------



SW-2, 03 JAN 2019 to 31 JAN 2019

SW-2, 03 JAN 2019 to 31 JAN 2019

ELEV 280	TDZE 280
----------	----------



CATEGORY	A	B	C	D
S-30	900-1	620 (700-1)	900-1 3/4 620 (700-1 3/4)	NA
CIRCLING	1020-1	740 (800-1)	1020-2 740 (800-2)	NA

GPS RWY 30