


WAAS CH 42827 W06A	APP CRS 062°	Rwy Idg TDZE Apt Elev	7401 944 955
--	------------------------	-----------------------------	---

RNAV (GPS) RWY 6

ELMIRA/CORNING RGNL (ELM)

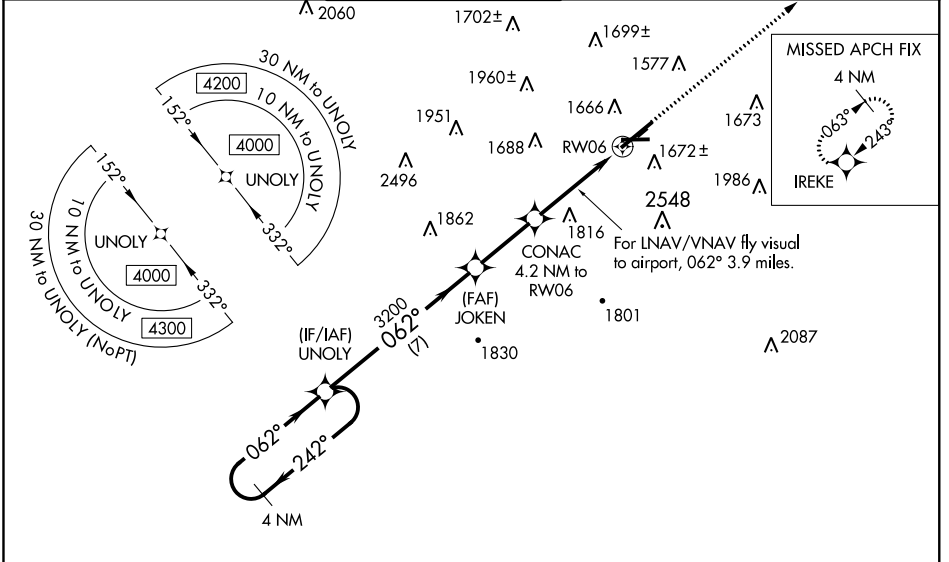
⚠ Night landing: Rwy 10 NA. For uncompensated Baro-VNAV systems, LNAV/VNAV NA below -16°C (4°F) or above 37°C (98°F). DME/DME RNP-0.3 NA. When local altimeter setting not received, LNAV/VNAV NA. When local altimeter setting not received, use Penn Yan altimeter setting and increase LPV DA 73 feet and all MDA 80 feet, and increase LNAV Cats A/C/D visibility ½ mile; inop table does not apply to LNAV Cats A/C/D; for inop MALSR, increase LPV all Cats visibility to ¾.

⚠ -21°C

MALSR 

MISSED APPROACH: Climb to 4200 direct IREKE and hold.

ATIS 125.475	ELMIRA APP CON ★ 128.425 257.8	ELMIRA TOWER ★ 121.1 (CTAF) 0 257.8	GND CON 121.9	CLNC DEL 121.9	UNICOM 122.95
------------------------	--	---	-------------------------	--------------------------	-------------------------



NE-2, 03 JAN 2019 to 31 JAN 2019

NE-2, 03 JAN 2019 to 31 JAN 2019

ELEV 955		D TDZE 944
----------	--	-------------------

4 NM Holding Pattern: UNOLY (GP 3.00° TCH 52) at 4000. VGSIs and RNP glidepaths are not coincident (VGS Angle 3.00/TCH 51).

Chart details: UNOLY at 4000, JOKEN at 3200, CONAC at 4.2 NM to RW06, RW06 at 4.2 NM to RW06. Altitudes: 4200, IREKE at 975±, 1008±. A 4 NM holding pattern is shown at UNOLY. A 'MISSED APCH FIX' inset shows a 4 NM climb to IREKE with heading 063° and 243°.

CATEGORY	A	B	C	D
LPV DA	1144-1/2		200 (200-1/2)	
LNAV/VNAV DA	2234-3		1290 (1300-3)	
LNAV MDA	2040-3/4 1096 (1100-3/4)	2040-1 1096 (1100-1)	2040-2 1/2 1096 (1100-2 1/2)	1096 (1100-2 1/2)
CIRCLING	2100-1 1/4 1145 (1200-1 1/4)	2100-1 1/2 1145 (1200-1 1/2)	2120-3 1165 (1200-3)	2160-3 1205 (1300-3)

HIRL Rwy 6-24 **0**
MIRL Rwy 10-28