


WAAS CH <b>99527</b> <b>W24A</b>	APP CRS <b>242°</b>	Rwy Idg TDZE Apt Elev	<b>7799</b> <b>955</b> <b>955</b>
--	------------------------	-----------------------------	---

# RNAV (GPS) RWY 24

ELMIRA/CORNING RGNL (ELM)

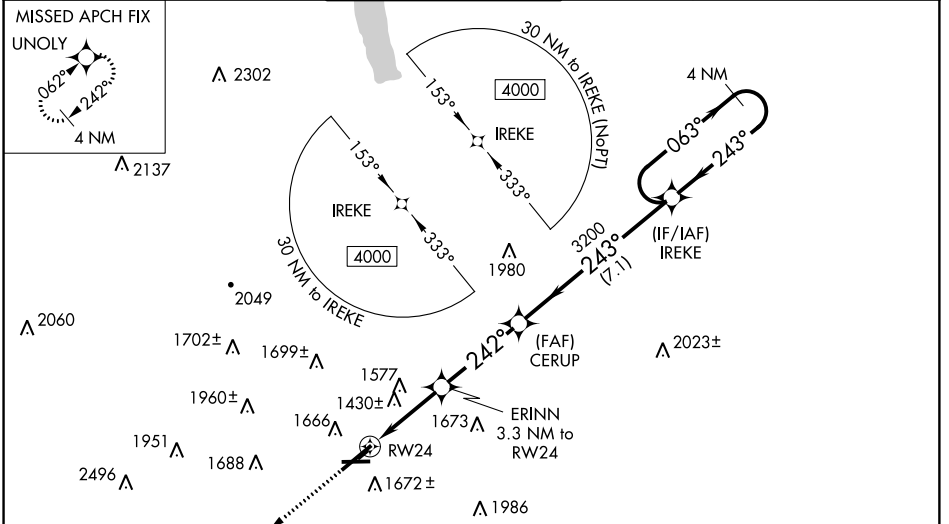
**⚠** Circling Rwy 10 NA at night. DME/DME RNP-0.3 NA. For uncompensated Baro-VNAV systems, LNAV/VNAV NA below -20°C (-4°F) or above 54°C (130°F). When local altimeter setting not received, use Penn Yan altimeter setting and increase all DA 73 feet and all MDA 80, and increase LPV all Cats and LNAV Cats C/D visibility ¼ mile and LNAV/VNAV all Cats visibility 1½ mile; inop table does not apply to LNAV/VNAV all Cats; for inop MALSR, increase LPV DA\*\* all Cats visibility to ¾ and LPV all Cats visibility to 1½. Baro-VNAV and VDP NA when using Penn Yan altimeter setting. For inop MALSR, increase LNAV Cats C/D visibility to 2½ mile. \*\* Missed approach requires a minimum climb of 260 feet per NM to 2300. \*\*RVR 1800 authorized with use of FD or AP or HUD to DA, NA when using Penn Yan altimeter setting.

**MALSR**

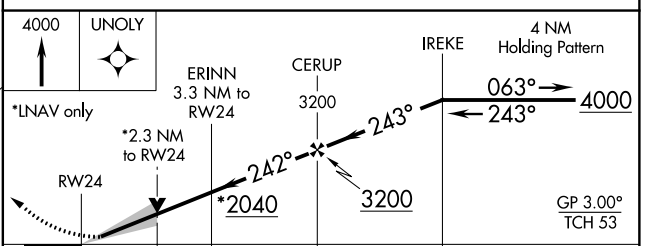
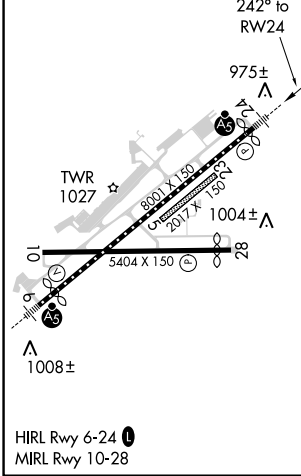


**MISSED APPROACH:**  
Climb to 4000 direct UNOLY and hold.

ATIS <b>125.475</b>	ELMIRA APP CON * <b>128.425 257.8</b>	ELMIRA TOWER * <b>121.1 (CTAF) 0 257.8</b>	GND CON <b>121.9</b>	CLNC DEL <b>121.9</b>	UNICOM <b>122.95</b>
------------------------	--	---	-------------------------	--------------------------	-------------------------



ELEV 955	<b>D</b>	TDZE 955
----------	----------	----------



CATEGORY	A	B	C	D
LPV DA**		1155/24	200 (200-½)	
LPV DA		1348/45	393 (400-¾)	
LNAV/VNAV DA		1807-2½	852 (900-2½)	
LNAV MDA	1740/24 785 (800-½)	1740/40 785 (800-¾)	1740-1¾	785 (800-1¾)
CIRCLING	2100-1¼ 1145 (1200-1¼)	2100-1½ 1145 (1200-1½)	2120-3 1165 (1200-3)	2160-3 1205 (1300-3)

NE-2, 03 JAN 2019 to 31 JAN 2019

NE-2, 03 JAN 2019 to 31 JAN 2019