

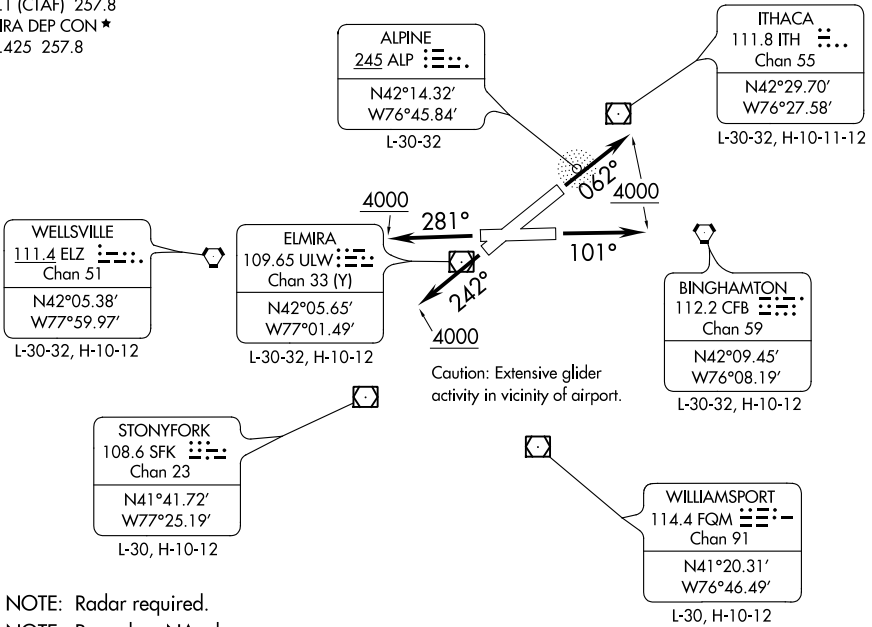
# ELMIRA FOUR DEPARTURE

AL-131 (FAA)

ELMIRA/CORNING RGNL (E.L.M)  
ELMIRA, NEW YORK

ATIS 125.475  
 CLNC DEL  
 121.9  
 GND CON  
 121.9  
 ELMIRA TOWER ★  
 121.1 (CTAF) 257.8  
 ELMIRA DEP CON ★  
 128.425 257.8

**TOP ALTITUDE:  
4000**



NOTE: Radar required.  
 NOTE: Procedure NA when  
 ELM APP CON closed.

### TAKEOFF MINIMUMS:

- Rwys 5, 23: NA-ATC.
- Rwy 6: 500-2¾ or Standard with minimum climb of 338' per NM to 1600.
- Rwy 10: 500-2 with minimum climb of 269' per NM to 2200 or standard with minimum climb of 400' per NM to 1600.
- Rwy 24: Standard with minimum climb of 405' per NM to 2300.
- Rwy 28: 800-3 with minimum climb of 373' per NM to 2400 or standard with minimum climb of 639' per NM to 2000.

NOTE: Chart not to scale.

### DEPARTURE ROUTE DESCRIPTION

- TAKEOFF RUNWAY 06: Climb heading 062° to 4000, thence....
- TAKEOFF RUNWAY 10: Climb heading 101° to 4000, thence....
- TAKEOFF RUNWAY 24: Climb heading 242° to 4000, thence....
- TAKEOFF RUNWAY 28: Climb heading 281° to 4000, thence....

....expect radar vectors to join assigned route/fix. Expect clearance to filed altitude ten minutes after departure.

LOST COMMUNICATIONS: If radio contact is not established/lost within 2 minutes after departure, proceed on course and climb to 5000. Ten minutes after departure, climb to filed altitude/flight level.

# ELMIRA FOUR DEPARTURE

NE-2, 03 JAN 2019 to 31 JAN 2019

NE-2, 03 JAN 2019 to 31 JAN 2019