

WAAS CH 45724 W17A	APP CRS 166°	Rwy Idg TDZE Apt Elev	5502 4759 4759
--	------------------------	-----------------------------	---

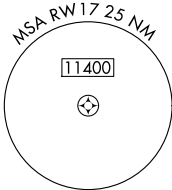
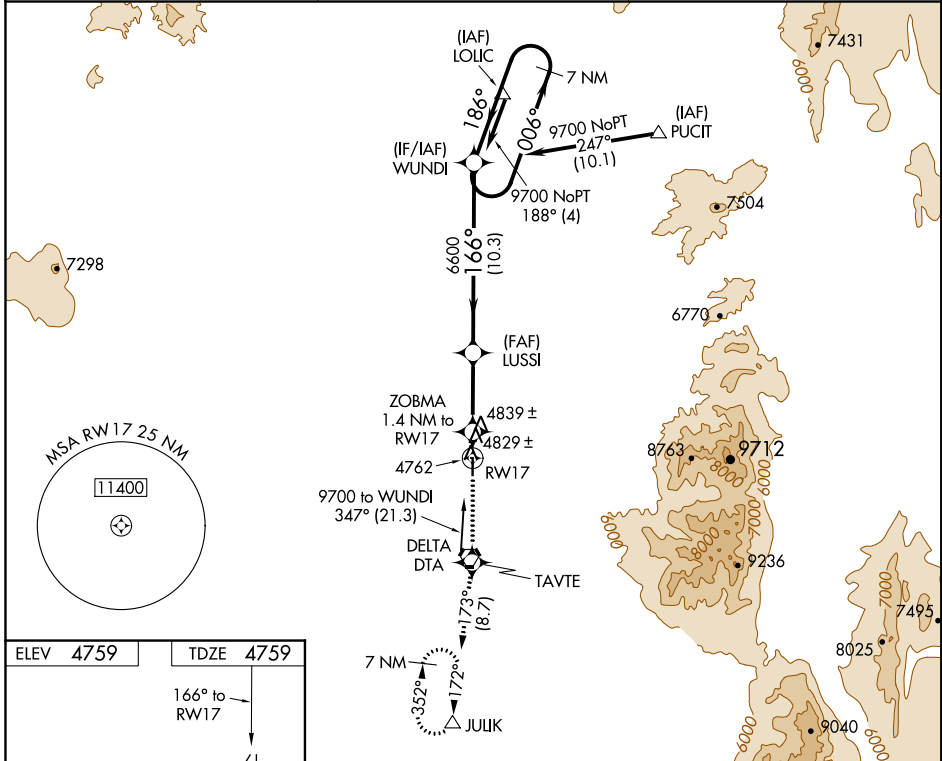
RNAV (GPS) RWY 17

DELTA MUNI (DTA)

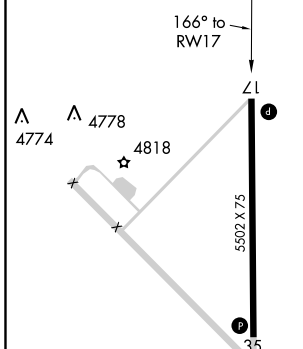
NA Helicopter visibility reduction below 3/4 SM NA.
When local altimeter setting not received, procedure NA.
DME/DME RNP-0.3 NA.

MISSED APPROACH: Climb to 12000 direct TAVTE and on track 173° to JULIK and hold, continue climb-in-hold to 12000.

AWOS-3 127.75	CEDAR CITY RADIO 122.55	UNICOM 122.8 (CTAF)
-------------------------	-----------------------------------	-------------------------------



ELEV 4759	TDZE 4759
------------------	------------------



12000	TAVTE	JULIK	VGSI and descent angles not coincident (VGSI Angle 3.00/TCH 31).	7 NM Holding Pattern
↑	✦	tr 173°		
ZOBMA 1.4 NM to RWY 17		LUSI	WUNDI	
RWY 17		5240	6600	9700
1.4 NM		4.3 NM	10.3 NM	
ANGLE	3.00°	166°	006°	186°
TCH	40			
CATEGORY	A	B	C	D
LP MDA	5080-1 321 (400-1)			
LNVA MDA	5100-1 341 (400-1)			
CIRCLING	5140-1 381 (400-1)	5220-1 461 (500-1)	5220-1½ 461 (500-1½)	5320-2 561 (600-2)

MIRL Rwy 17-35
REIL Rwy 17 and 35

SW-4, 03 JAN 2019 to 31 JAN 2019

SW-4, 03 JAN 2019 to 31 JAN 2019