

EC-2, 03 JAN 2019 to 31 JAN 2019

DAYTON APP CON  
118.425 323.15  
JAMES M. COX ATIS 125.8

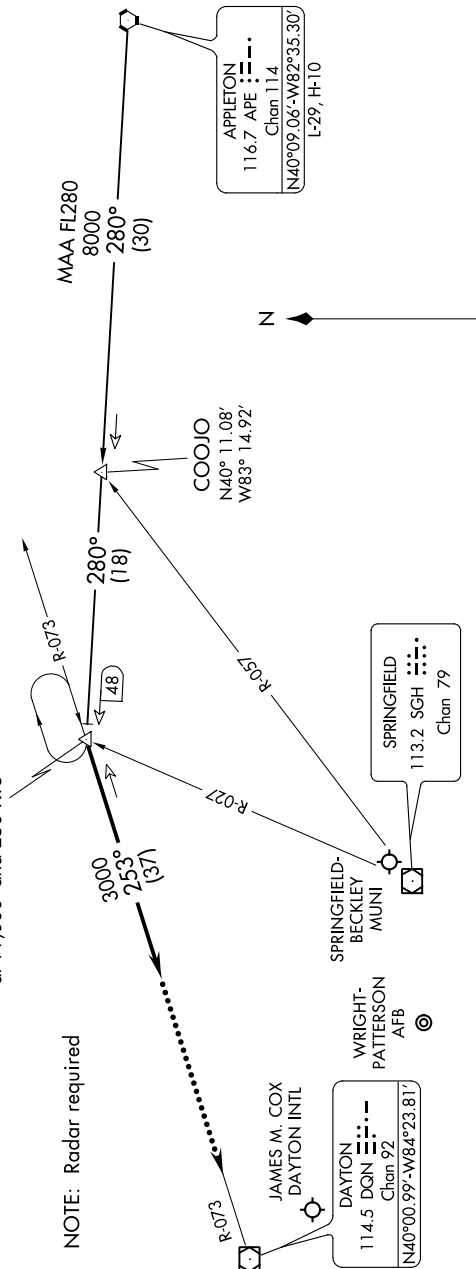
DANEI

N40°12.16'-W83°38.36'

VERTICAL NAVIGATION PLANNING

All aircraft expect clearance to cross  
at 11,000' and 250 KTS

NOTE: Radar required



APPLETON  
116.7 APE  
Chan 114  
N40°09.06'-W82°35.30'  
L-29, H-10

SPRINGFIELD  
113.2 SGH  
Chan 79

DAYTON  
114.5 DQN  
Chan 92  
N40°00.99'-W84°23.81'

DAYTON-  
WRIGHT BROTHERS

MIDDLETOWN RGHL  
HOOK FIELD

APPLETON TRANSITION (APE:DANEI2): From over APE VORTAC via APE R-280 to DANEI INT. Thence . . . . .

. . . . From over DANEI INT via heading 253°. Expect radar vectors to final approach course.

LOST COMMUNICATIONS:

In the event of lost communications: At DANEI INT, proceed direct DQN VOR/DME maintain 3000 feet until DQN VOR/DME.

NOTE: Chart not to scale.

EC-2, 03 JAN 2019 to 31 JAN 2019