

WAAS Ch 45620 W31A	APP CRS 319°	Rwy Idg TDZE Apt Elev	5001 42 42
--	------------------------	-----------------------------	---------------------------------------

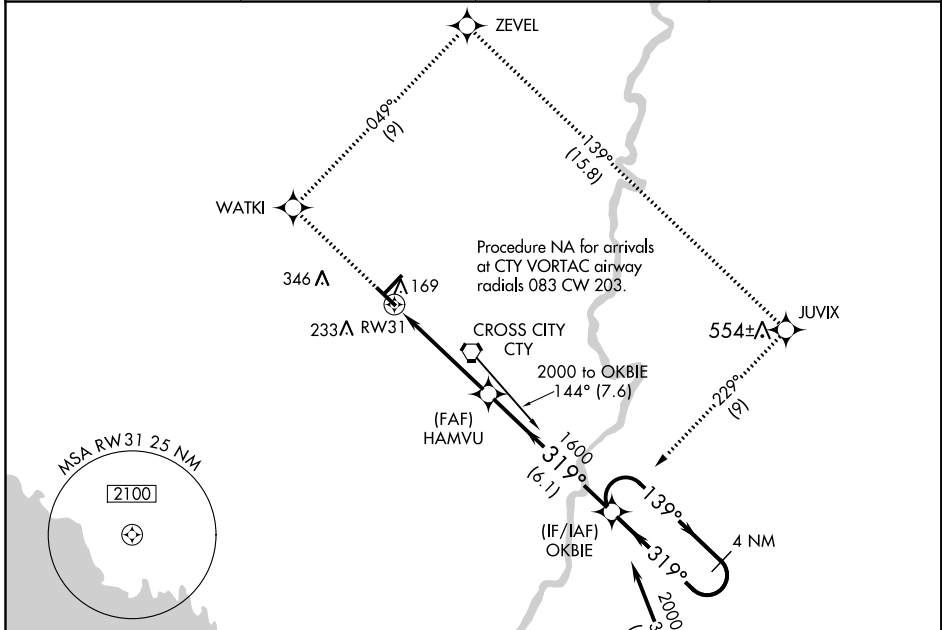
RNAV (GPS) RWY 31

CROSS CITY (CTY)

NA Baro-VNAV NA. DME/DME RNP-0.3 NA. Use Williston altimeter setting; when not received, use Gainesville altimeter setting and increase all DA 25 feet and all MDA 40 feet, increase Circling Cat C visibility ¼ mile. Rwy 31 Straight-in and Circling and Circling to Rwy 4/13 NA at night. Helicopter visibility reduction below 1 SM NA.

MISSED APPROACH: Climb to 2000 direct WATKI and right turn on track 049° to ZEVEL and on track 139° to JUVIX and right turn on track 229° to OKBIE and hold.

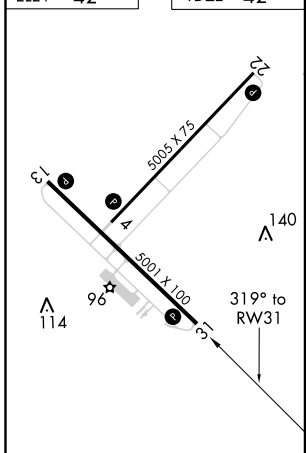
AWOS-3PT 120.775	WILLISTON AWOS-3T 118.425	JACKSONVILLE CENTER 127.8 352.0	UNICOM 122.8 (CTAF)
----------------------------	-------------------------------------	---	-------------------------------



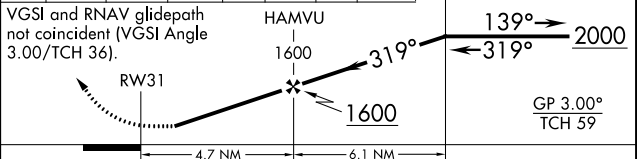
SE-3. 03 JAN 2019 to 31 JAN 2019

SE-3. 03 JAN 2019 to 31 JAN 2019

ELEV 42	TDZE 42
---------	---------



2000 WATKI	ZEVEL tr 049°	JUVIX tr 139°	OKBIE tr 229°	4 NM Holding Pattern
------------	---------------	---------------	---------------	----------------------



CATEGORY	A	B	C	D
LPV DA		383-1¼	341 (400-1¼)	
LNAV/ VNAV DA		546-1¾	504 (600-1¾)	
LNAV MDA	580-1	538 (600-1)	580-1½ 538 (600-1½)	580-1¾ 538 (600-1¾)
CIRCLING	620-1	578 (600-1)	620-1½ 578 (600-1½)	740-2¼ 698 (700-2¼)