

APP CRS	Rwy Idg	6095
034°	TDZE	4186
	Apt Elev	4187

RNAV (GPS) RWY 3

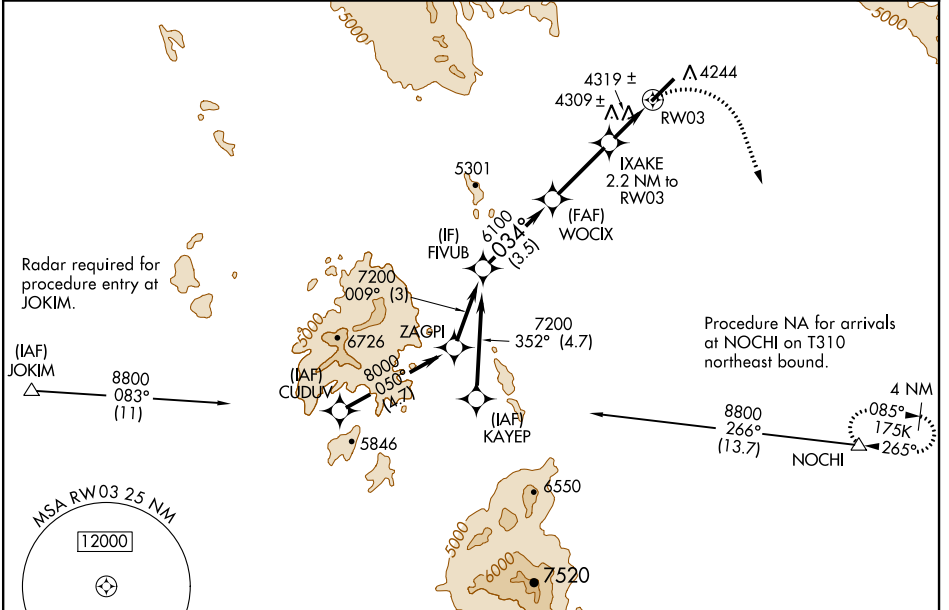
COCHISE COUNTY (P33)

NA Obtain local altimeter setting on CTAF; when not received, use Douglas Bisbee altimeter setting. DME/DME RNP-0.3 NA. VDP NA with Douglas Bisbee altimeter setting.

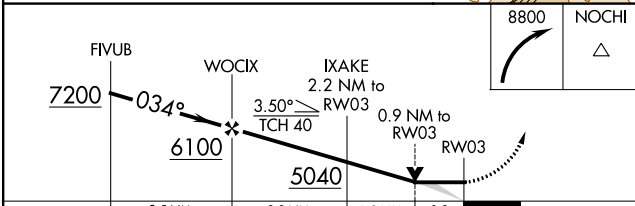
MISSED APPROACH: Climbing right turn to 8800 direct NOCHI and hold, continue climb-in-hold to 8800. When authorized by ATC, continue climb-in-hold to MEA for route of flight.

ALBUQUERQUE CENTER **134.45 327.15**

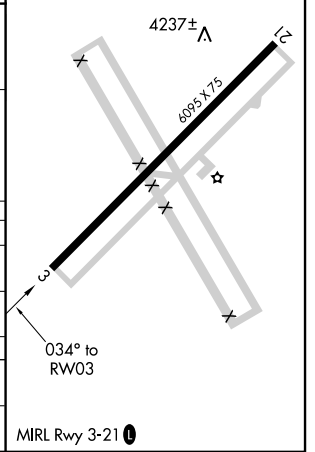
UNICOM **122.8 (CTAF) 0**



ELEV 4187	TDZE 4186
-----------	-----------



CATEGORY	A	B	C	D
RNAV MDA	4560-1	374 (400-1)		NA
CIRCLING	4600-1 413 (500-1)	4640-1 453 (500-1)		NA
DOUGLAS BISBEE ALTIMETER SETTING MINIMUMS				
RNAV MDA	4680-1	494 (500-1)		NA
CIRCLING	4720-1	533 (600-1)		NA



SW-4, 03 JAN 2019 to 31 JAN 2019

SW-4, 03 JAN 2019 to 31 JAN 2019