

# THRNE THREE ARRIVAL (RNAV) Arrival Routes

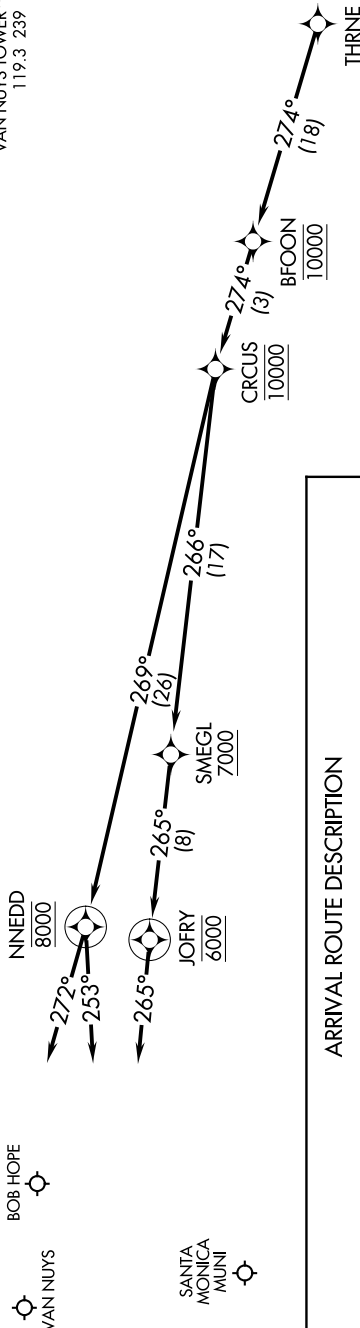
AL-67 (FAA)

BURBANK, CALIFORNIA

SW-3, 03 JAN 2019 to 31 JAN 2019

- SOCAL APP CON  
126.7 370.95
- BOB HOPE D-ATIS  
134.5
- BURBANK TOWER  
118.7 254.3
- SANTA MONICA ATIS  
119.15
- SANTA MONICA TOWER\*  
120.1 257.8
- VAN NUYS ATIS  
127.55
- VAN NUYS TOWER\*\*  
119.3 239

- NOTE: RADAR required.
- NOTE: RNAV 1.
- NOTE: DME/DME/IRU or GPS required.
- NOTE: Turbojet and turboprop aircraft only.
- NOTE: Expect local area altimeter setting reaching FL200.



## ARRIVAL ROUTE DESCRIPTION

**LANDING KBUR:** From THRNE on track 274° to cross BFOON at 10000, then on track 274° to cross CRCUS at 10000, then on track 269° to cross NNEDD at 8000, then on track 253°. Expect RADAR vectors to final approach course.

**LANDING KSMO:** From THRNE on track 274° to cross BFOON at 10000, then on track 274° to cross CRCUS at 10000, then on track 266° to cross SMEGL at or above 7000, then on track 265° to cross JOFRY at 6000, then on track 265°. Expect RADAR vectors to final approach course.

**LANDING KVNY:** From THRNE on track 274° to cross BFOON at 10000, then on track 274° to cross CRCUS at 10000, then on track 269° to cross NNEDD at 8000, then on track 272°. Expect RADAR vectors to final approach course.

NOTE: Chart not to scale.

# THRNE THREE ARRIVAL (RNAV) Arrival Routes

BURBANK, CALIFORNIA