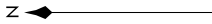


THRNE THREE ARRIVAL (RNAV) Transition Route

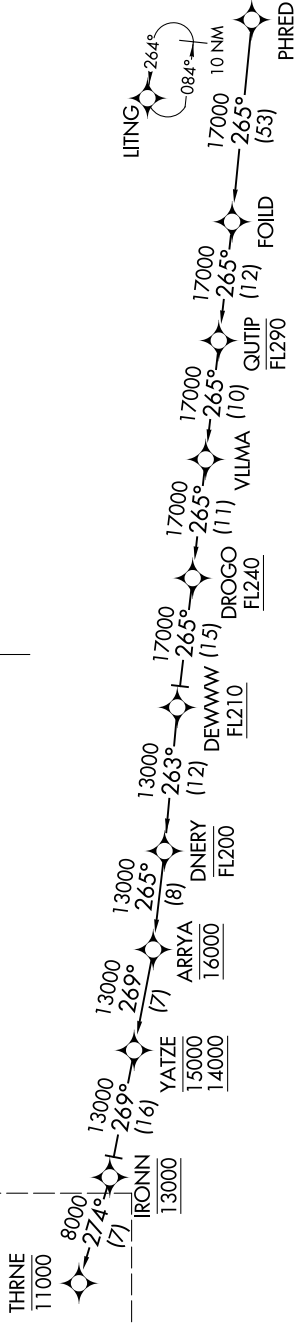
AL-67 (FAA)

BURBANK, CALIFORNIA

- SOCAL APP CON
126.7 370.95
- BOB HOPE D-ATIS
134.5
- BURBANK TOWER
118.7 254.3
- SANTA MONICA ATIS
119.15
- SANTA MONICA TOWER ★
120.1 257.8
- VAN NUYS ATIS
127.55
- VAN NUYS TOWER ★
119.3 239



See following page
for Arrival Routes.



PHRED TRANSITION (PHRED.THRNE3)

- NOTE: RADAR required.
- NOTE: RNAV 1.
- NOTE: DME/DME/IRU or GPS required.
- NOTE: Turbojet and turboprop aircraft only.
- NOTE: Expect local area altimeter setting reaching FL200.

NOTE: Chart not to scale.

(CONTINUED ON FOLLOWING PAGE)

THRNE THREE ARRIVAL (RNAV) Transition Route

BURBANK, CALIFORNIA