

APP CRS 108°	Rwy Idg TDZE Apt Elev	3407 422 422
------------------------	-----------------------------	---

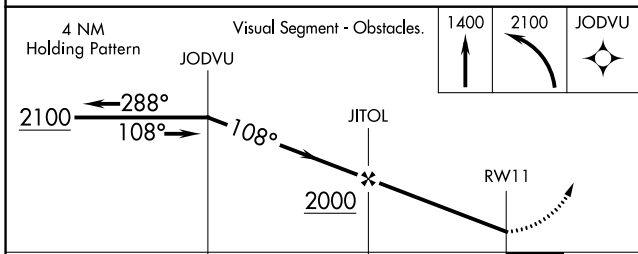
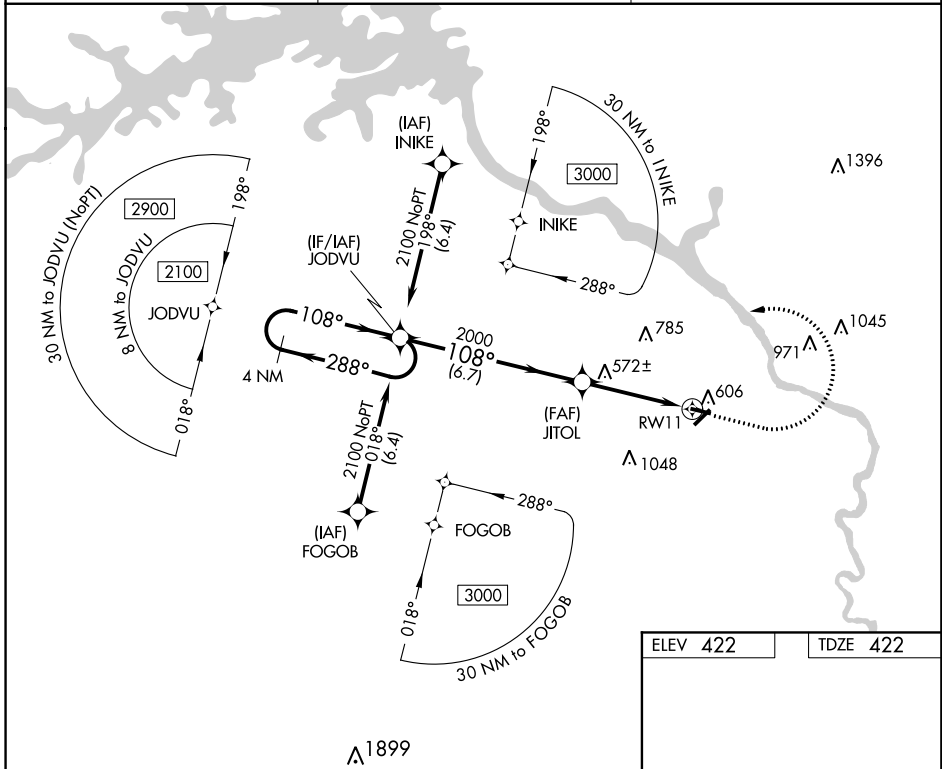
RNAV (GPS) Y RWY 11

DANIEL FIELD (DNL)

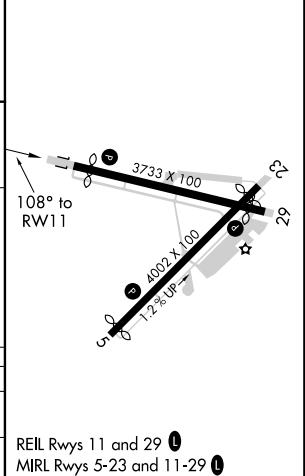
ASR **▽** DME/DME RNP-0.3 NA. Procedure NA at night. When local altimeter setting not received, use Augusta Rgnl at Bush Field altimeter setting and increase all MDA 60 feet and increase LNAV Cat C and D visibility ¼ SM. Rwy 11 helicopter visibility reduction below 1 SM NA.

△ MISSED APPROACH: Climb to 1400 then climbing left turn to 2100 direct JODVU and hold.

ASOS 135.275	AUGUSTA APP CON ★ 126.8 270.3	UNICOM 123.05 (CTAF) ①
------------------------	---	----------------------------------



ELEV 422	TDZE 422
----------	----------



CATEGORY	A	B	C	D
LNAV MDA	840-1	418 (500-1)	840-1½	418 (500-1½)
C CIRCLING	920-1	498 (500-1)	1400-3	978 (1000-3)

REIL Rwy 11 and 29 ①
MIRL Rwy 5-23 and 11-29 ①

SE-4, 03 JAN 2019 to 31 JAN 2019

SE-4, 03 JAN 2019 to 31 JAN 2019