

(CHATT6.CHATT) 18088

AL-28 (FAA)

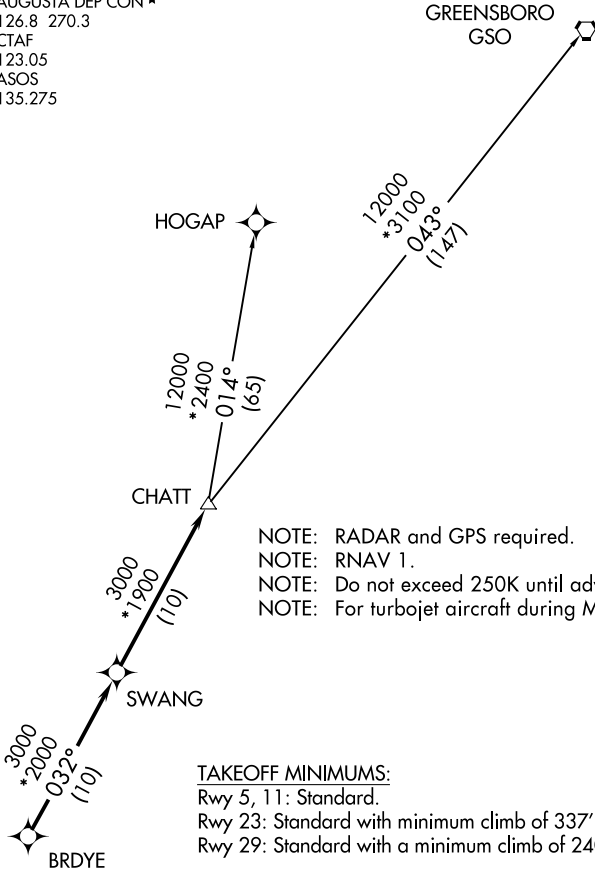
DANIEL FIELD (DNL)  
AUGUSTA, GEORGIA

# CHATT SIX DEPARTURE (RNAV)

AUGUSTA DEP CON ★  
126.8 270.3  
CTAF  
123.05  
ASOS  
135.275

GREENSBORO  
GSO

**TOP ALTITUDE:  
ASSIGNED BY ATC**



- NOTE: RADAR and GPS required.
- NOTE: RNAV 1.
- NOTE: Do not exceed 250K until advised by ATC.
- NOTE: For turbojet aircraft during Masters golf tournament week.

TAKEOFF MINIMUMS:

- Rwy 5, 11: Standard.
- Rwy 23: Standard with minimum climb of 337' per NM to 1300.
- Rwy 29: Standard with a minimum climb of 240' per NM to 1300.

NOTE: Chart not to scale.



### DEPARTURE ROUTE DESCRIPTION

TAKEOFF RWY 5, 11, 23, 29: Climb on assigned heading for RADAR vectors to BRDYE, then on depicted route to CHATT, thence . . . .

. . . . Maintain altitude assigned by ATC. Expect clearance to filed altitude/flight level within 10 minutes after departure.

- GREENSBORO TRANSITION (CHATT6.GSO):
- HOGAP TRANSITION (CHATT6.HOGAP):

# CHATT SIX DEPARTURE (RNAV)

(CHATT6.CHATT) 29MAR18

AUGUSTA, GEORGIA  
DANIEL FIELD (DNL)

SE-4, 03 JAN 2019 to 31 JAN 2019

SE-4, 03 JAN 2019 to 31 JAN 2019