

WAAS CH 82120 W28A	APP CRS 279°	Rwy Idg TDZE Apt Elev	5001 1587 1636
--	------------------------	-----------------------------	---

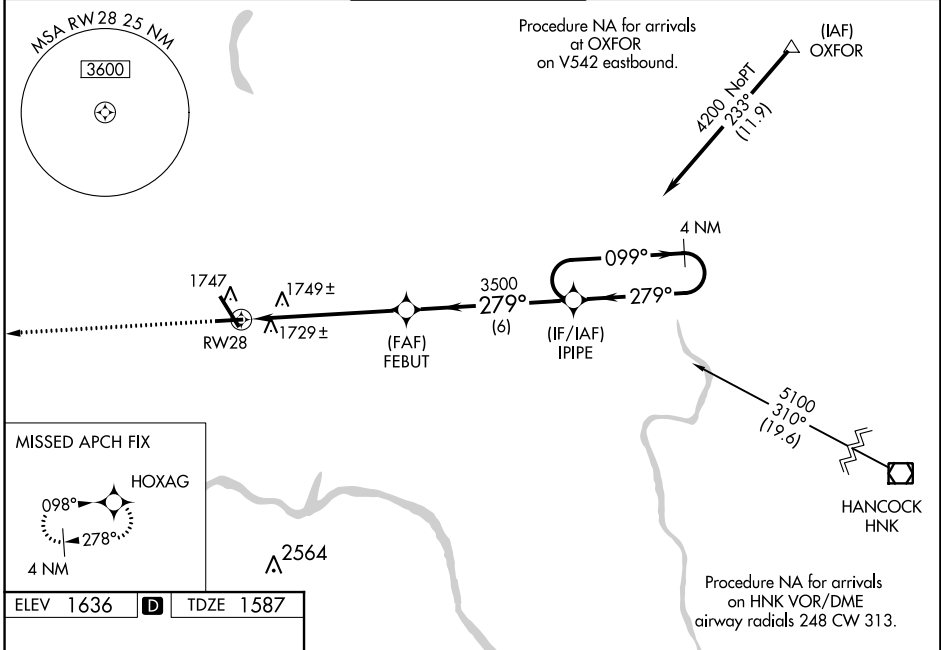
RNAV (GPS) RWY 28

GREATER BINGHAMTON/EDWIN A. LINK FIELD (BGM)

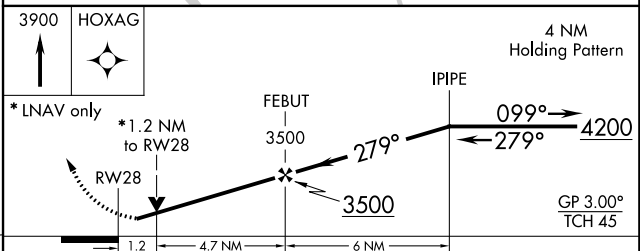
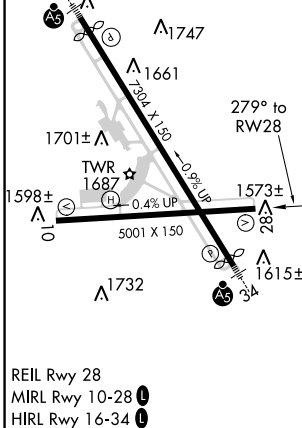
⚠ Baro-VNAV NA when using Ithaca altimeter setting. For uncompensated Baro-VNAV systems, LNAV/VNAV NA below -18°C (0°F) or above 33°C (91°F). DME/DME RNP-0.3 NA. Rwy 28 helicopter visibility reduction below 3/4 SM NA. When local altimeter setting not received, use Ithaca altimeter setting and increase all DA 138 feet and all MDA 140 feet; increase LPV all Cats visibility 1/2 mile, LNAV/VNAV all Cats 3/8 mile, LNAV Cats C/D visibility 3/8 mile and Circling Cats C/D visibility 1/4 mile. VDP NA with Ithaca altimeter setting.

MISSED APPROACH:
Climb to 3900 direct HOXAG and hold.

ATIS 128.15	BINGHAMTON APP CON * 118.6 257.625	BINGHAMTON TOWER * 119.3 (CTAF) 239.25	GND CON 121.9	CLNC DEL 125.05	UNICOM 122.95
-----------------------	--	--	-------------------------	---------------------------	-------------------------



ELEV 1636	D	TDZE 1587
-----------	----------	-----------



CATEGORY	A	B	C	D
LPV DA		1837-3/4	250 (300-3/4)	
LNAV/VNAV DA		2091-1 1/8	504 (500-1 1/8)	
LNAV MDA	2000-1	413 (400-1)	2000-1 1/4	413 (400-1 1/4)
C CIRCLING	2120-1	484 (500-1)	2120-1 1/2 484 (500-1 1/2)	2200-2 564 (600-2)

NE-2, 03 JAN 2019 to 31 JAN 2019

NE-2, 03 JAN 2019 to 31 JAN 2019