

WAAS CH <b>86825</b> <b>W20A</b>	APP CRS <b>199°</b>	Rwy Idg TDZE Apt Elev	<b>3500</b> <b>1789</b> <b>1789</b>
--	------------------------	-----------------------------	---

# RNAV (GPS) RWY 20

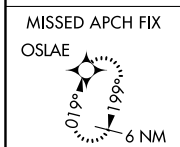
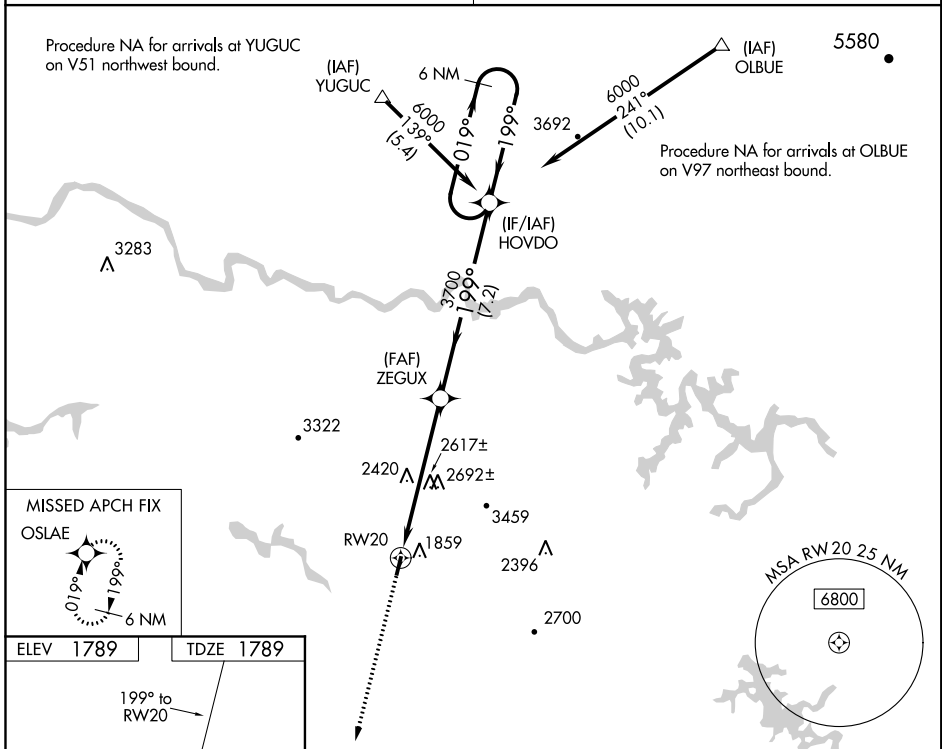
MARTIN CAMPBELL FIELD (1A3)

**NA** DME/DME RNP-0.3 NA. Use Western Carolina Rgnl altimeter setting, when not received, use Dalton Muni altimeter setting and increase all MDA 160 feet. Procedure NA at night. Rwy 20 helicopter visibility reduction below 1 SM NA.

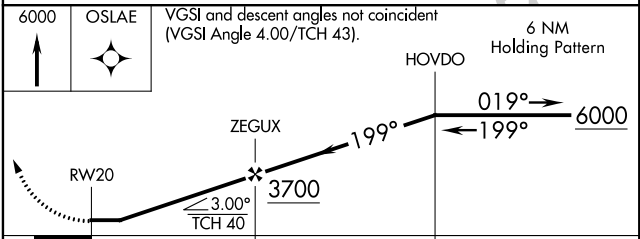
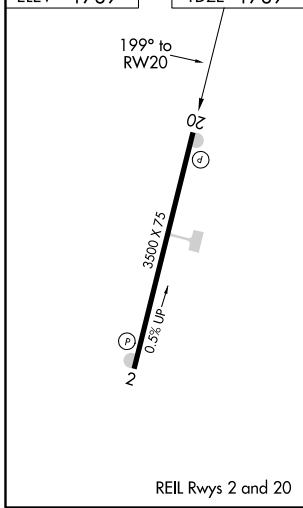
MISSED APPROACH: Climb to 6000 direct OSLAE and hold, continue climb in hold to 6000.

ATLANTA CENTER  
**133.1 342.425**

(CTAF)  
**122.9**



ELEV 1789	TDZE 1789
-----------	-----------



CATEGORY	A	B	C	D
LP MDA	2940-1¼ 1151 (1200-1¼)	2940-1½ 1151 (1200-1½)	2940-3 1151 (1200-3)	NA
LNAV MDA	3020-1¼ 1231 (1300-1¼)	3020-1½ 1231 (1300-1½)	3020-3 1231 (1300-3)	NA
CIRCLING	3020-1¼ 1231 (1300-1¼)	3020-1½ 1231 (1300-1½)	3020-3 1231 (1300-3)	NA

SE-1, 06 DEC 2018 to 03 JAN 2019

SE-1, 06 DEC 2018 to 03 JAN 2019