

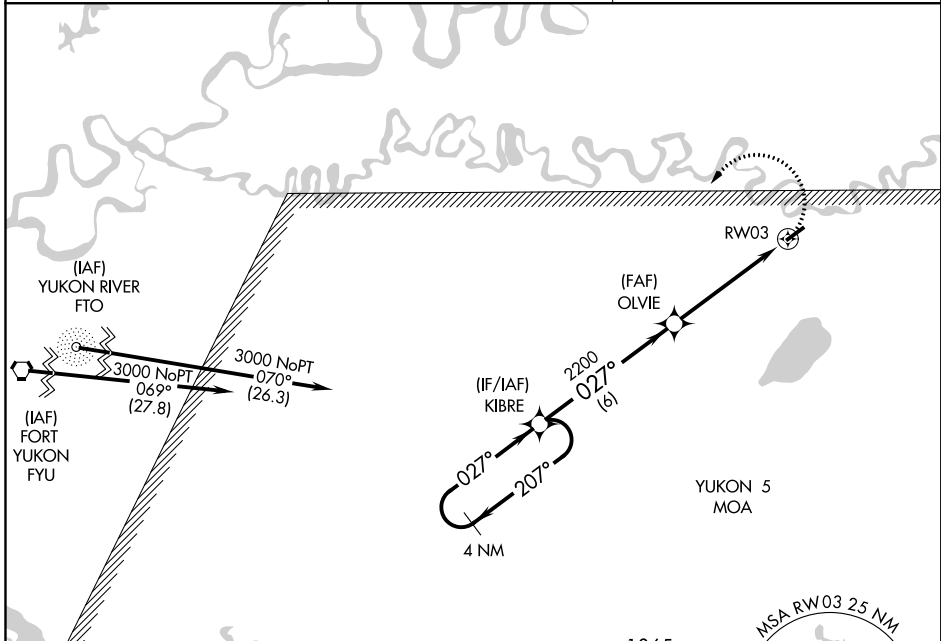
APP CRS 027°	Rwy Idg TDZE Apt Elev	4000 538 544
------------------------	-----------------------------	---

RNAV (GPS) RWY 3

CHALKYITSIK (CIK) (PACI)

NA -32°C	DME/DME RNP-0.3 NA. Use Fort Yukon altimeter setting.	MISSED APPROACH: Climbing left turn to 3000 direct KIBRE and hold.
-------------	--	---

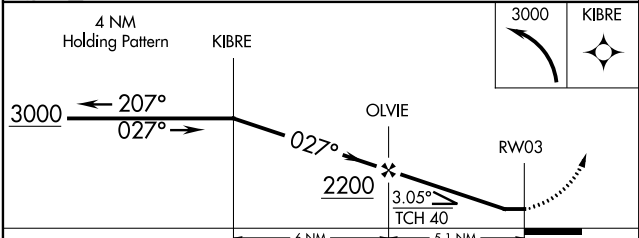
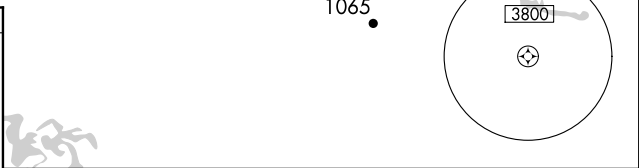
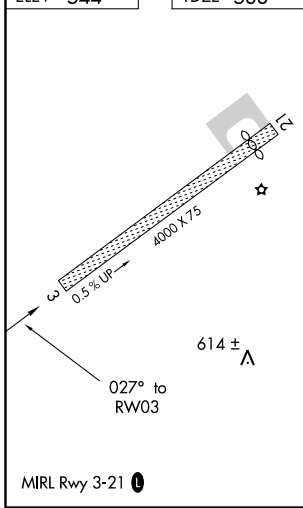
FORT YUKON AWOS-3 125.8	ANCHORAGE CENTER 135.0 225.4	CTAF 122.9
-----------------------------------	--	----------------------



AK, 08 NOV 2018 to 03 JAN 2019

AK, 08 NOV 2018 to 03 JAN 2019

ELEV 544	TDZE 538
----------	----------



CATEGORY	A	B	C	D
LNAV MDA	1020-1	482 (500-1)	1020-1¼ 482 (500-1¼)	NA
CIRCLING	1120-1 576 (600-1)	1180-1 636 (700-1)	1220-2 676 (700-2)	NA