

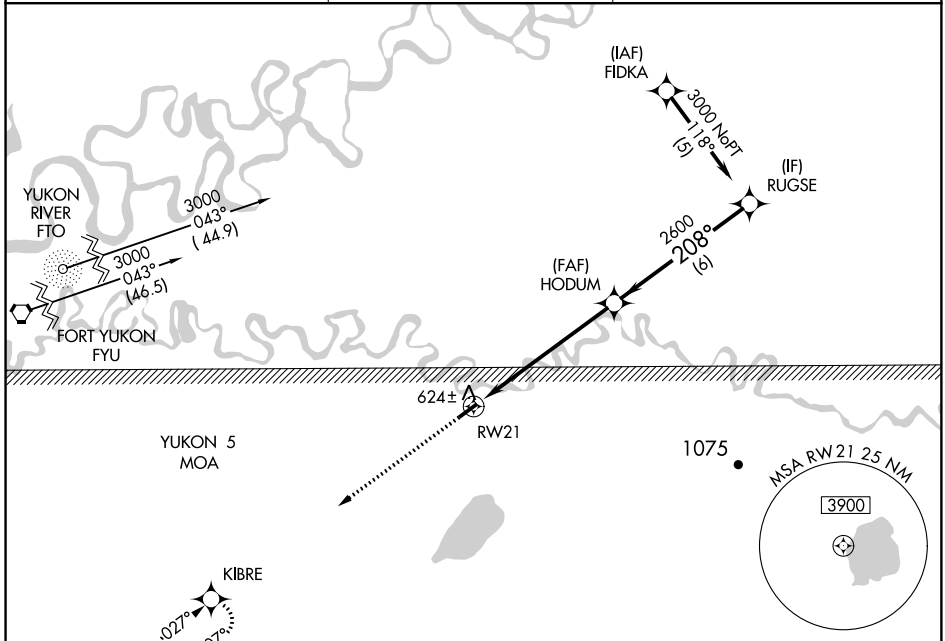
APP CRS 208°	Rwy Idg TDZE Apt Elev	3500 541 544
------------------------	-----------------------------	---

RNAV (GPS) RWY 21

CHALKYITSIK (CIK) (PACI)

	DME/DME RNP-0.3 NA. Use Fort Yukon altimeter setting.	MISSED APPROACH: Climb to 3000 direct KIBRE and hold.
--	--	--

FORT YUKON AWOS-3 125.8	ANCHORAGE CENTER 135.0 225.4	CTAF 122.9
-----------------------------------	--	----------------------



AK, 08 NOV 2018 to 03 JAN 2019

AK, 08 NOV 2018 to 03 JAN 2019

	ELEV 544	TDZE 541		
CATEGORY	A	B	C	D
RNAV MDA	1040-1	499 (500-1)	1040-1½ 499 (500-1½)	NA
CIRCLING	1120-1 576 (600-1)	1180-1 636 (700-1)	1220-2 676 (700-2)	NA

