

APP CRS	Rwy Idg	3400
139°	TDZE	1228
	Apt Elev	1228

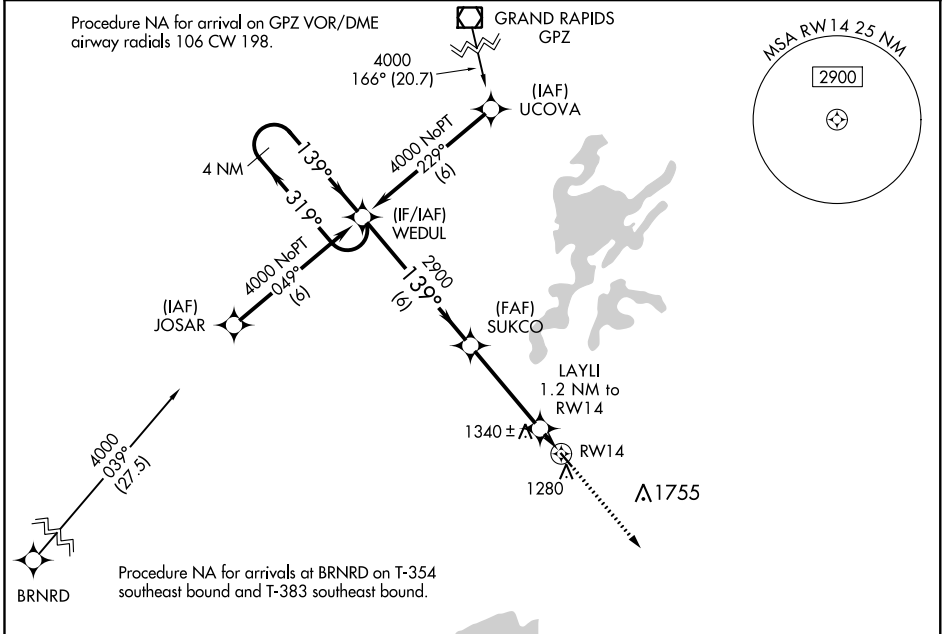
RNAV (GPS) RWY 14

ISEDOR IVERSON (H.Z.X)

▼ DME/DME RNP-0.3 NA. When local altimeter setting not received, use Aikin altimeter setting and increase all MDA 40 feet.

MISSED APPROACH: Climb to 4000 direct ZUDED and hold.

AWOS-3 119.575	MINNEAPOLIS CENTER 127.9 281.45	CTAF 122.9 0
--------------------------	---	------------------------



NC-1, 06 DEC 2018 to 03 JAN 2019

NC-1, 06 DEC 2018 to 03 JAN 2019

