

VORTAC ICT 113.8 Chan 85	APP CRS 152°	Rwy Idg TDZE Apt Elev 5201 1277 1277
--	------------------------	--

VOR RWY 18

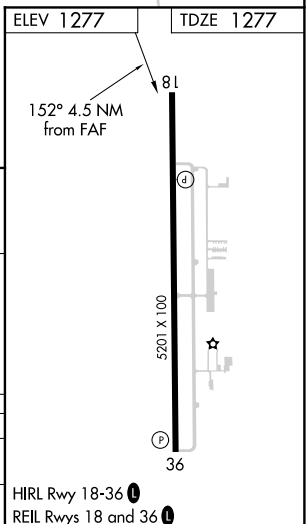
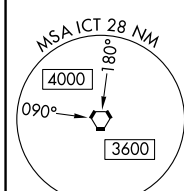
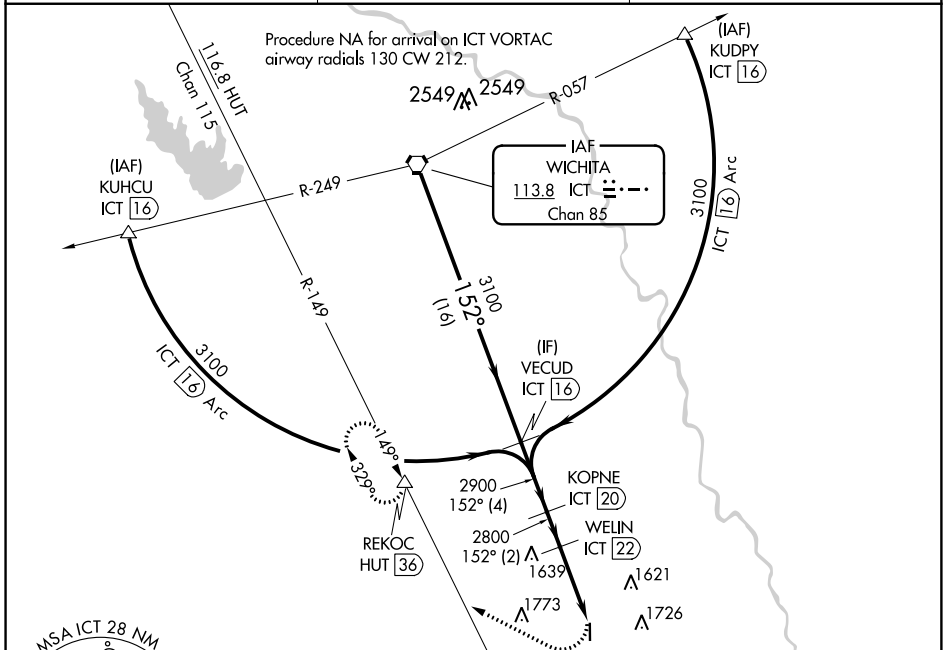
WELLINGTON MUNI (E/GT)

DME Required.

▼ When local altimeter setting not received, use Wichita
▲ NA Dwight D Eisenhower National altimeter setting.

MISSED APPROACH: Climbing right turn to 3300 on heading 290° and HUT VOR/DME R-149 to REKOC/HUT 36 DME and hold.

AWOS-3 118.875	WICHITA APP CON 134.85	UNICOM 122.8 (CTAF) 0
--------------------------	----------------------------------	--



ICT VORTAC	VEVUD ICT 16	KOPNE ICT 20	WELIN ICT 22	ICT 26.5
3600	3100	2900	2800	26.5
16 NM	4 NM	2 NM	4.5 NM	
152°			3.13° TCH 40	
3300				
hdg 290°				
HUT R-149				
REKOC				
CATEGORY	A	B	C	D
S-18	2100-1 823 (900-1)	2100-1¼ 823 (900-1¼)	2100-2½ 823 (900-2½)	823 (900-2½)
CIRCLING	2100-1¼ 823 (900-1¼)		2100-2½ 823 (900-2½)	2180-3 903 (1000-3)

NC-2, 06 DEC 2018 to 03 JAN 2019

NC-2, 06 DEC 2018 to 03 JAN 2019