

RNAV (GPS) RWY 36

WELLINGTON MUNI (E/GT)

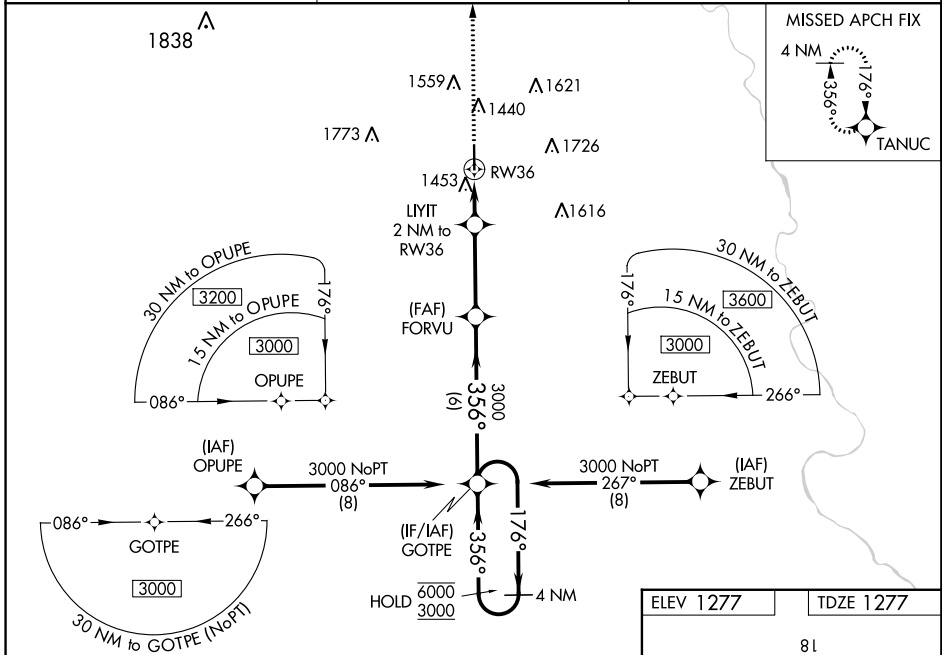
WAAS CH 70504 W36A	APP CRS 356°	Rwy Idg TDZE Apt Elev	5201 1277 1277
--	------------------------	-----------------------------	---

RNP APCH.

▽ Baro-VNAV and VDP NA when using Wichita Dwight D Eisenhower National altimeter setting.
△ NA For uncompensated Baro-VNAV systems, LNAV/VNAV NA below -17°C or above 54°C. When local altimeter setting not received, use Wichita Dwight D Eisenhower National altimeter setting: increase LPV DA to 1581 feet and all visibilities ½ SM; increase LNAV/VNAV DA to 1674 feet and all visibilities ½ SM; increase all MDAs 60 feet and Circling Cats C/D visibility ½ SM.

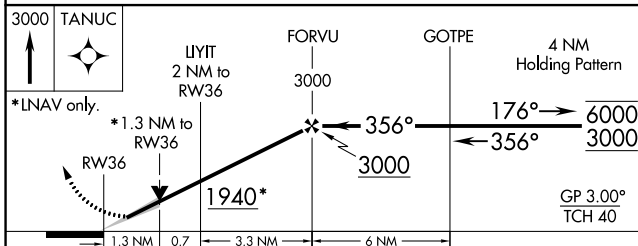
MISSED APPROACH:
Climb to 3000 direct TANUC and hold.

AWOS-3 118.875	WICHITA APP CON 134.85	UNICOM 122.8 (CTAF) 0
--------------------------	----------------------------------	--



NC-2, 06 DEC 2018 to 03 JAN 2019

NC-2, 06 DEC 2018 to 03 JAN 2019



ELEV 1277	TDZE 1277
-----------	-----------

A vertical scale shows altitudes from 36 to 81. Below it is a simplified airport diagram showing RWY 36, RWY 18-36, and RWY 18. A star symbol indicates the runway end. A heading of 356° to RW36 is shown.

CATEGORY	A	B	C	D
LPV DA		1527-¾	250 (300-¾)	
LNAV/VNAV DA		1614-1	337 (400-1)	
LNAV MDA	1720-1	443 (500-1)	1720-1⅓	443 (500-1⅓)
C CIRCLING	1760-1	483 (500-1)	2040-2¼ 763 (800-2¼)	2140-2¾ 863 (900-2¾)