

WAAS CH 93804 W18A	APP CRS 176°	Rwy ldg TDZE Apt Elev	5201 1277 1277
--	------------------------	-----------------------------	---

RNAV (GPS) RWY 18

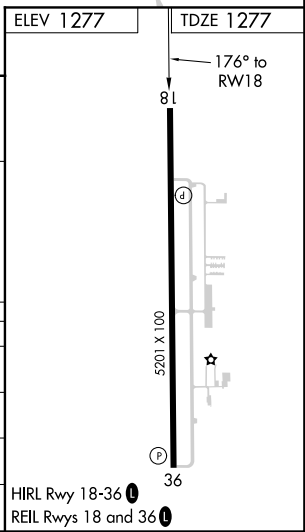
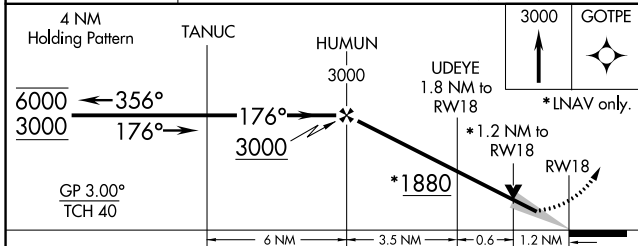
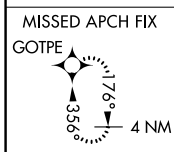
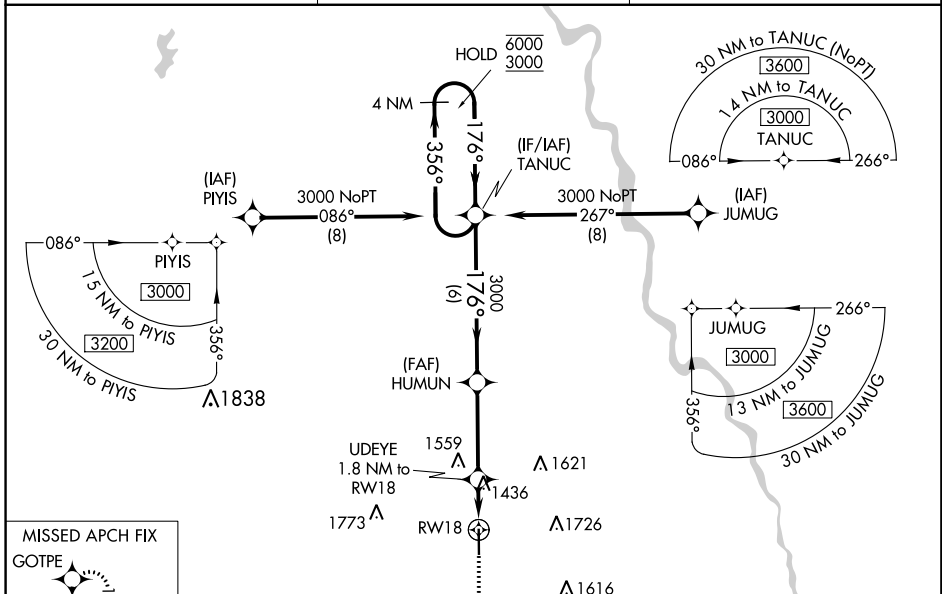
WELLINGTON MUNI (EGT)

RNP APCH.

Baro-VNAV and VDP NA when using Wichita Dwight D Eisenhower National altimeter setting.
 For uncompensated Baro-VNAV systems, LNAV/VNAV NA below -17°C or above 54°C.
 When local altimeter setting not received, use Wichita Dwight D Eisenhower National altimeter setting: increase LPV DA to 1531 feet; increase LNAV/VNAV DA to 1776 feet; increase all MDAs 60 feet and LNAV Cats C/D visibility 1/8 SM and Circling Cats C/D visibility 1/4 SM.

MISSED APPROACH:
 Climb to 3000 direct
 GOTPE and hold.

AWOS-3 118.875	WICHITA APP CON 134.85	UNICOM 122.8 (CTAF)
--------------------------	----------------------------------	-------------------------------



CATEGORY	A	B	C	D
LPV DA		1477-3/4	200 (200-3/4)	
LNAV/VNAV DA		1722-13/8	445 (500-13/8)	
LNAV MDA	1700-1	423 (500-1)	1700-1 1/4	423 (500-1 1/4)
CIRCLING	1760-1	483 (500-1)	2040-2 1/4 763 (800-2 1/4)	2140-2 3/4 863 (900-2 3/4)

NC-2, 06 DEC 2018 to 03 JAN 2019

NC-2, 06 DEC 2018 to 03 JAN 2019