

WAAS CH 56334 W15A	APP CRS 154°	Rwy Idg TDZE Apt Elev	4200 1378 1379
--	------------------------	-----------------------------	---

RNAV (GPS) RWY 15

EL DORADO/CAPTAIN JACK THOMAS MEMORIAL (EQA)

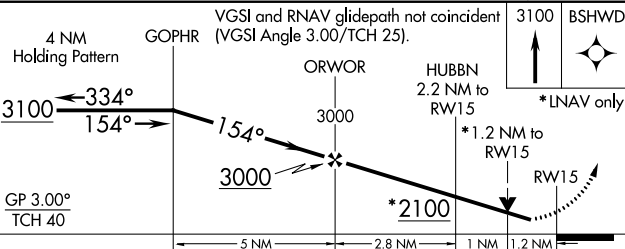
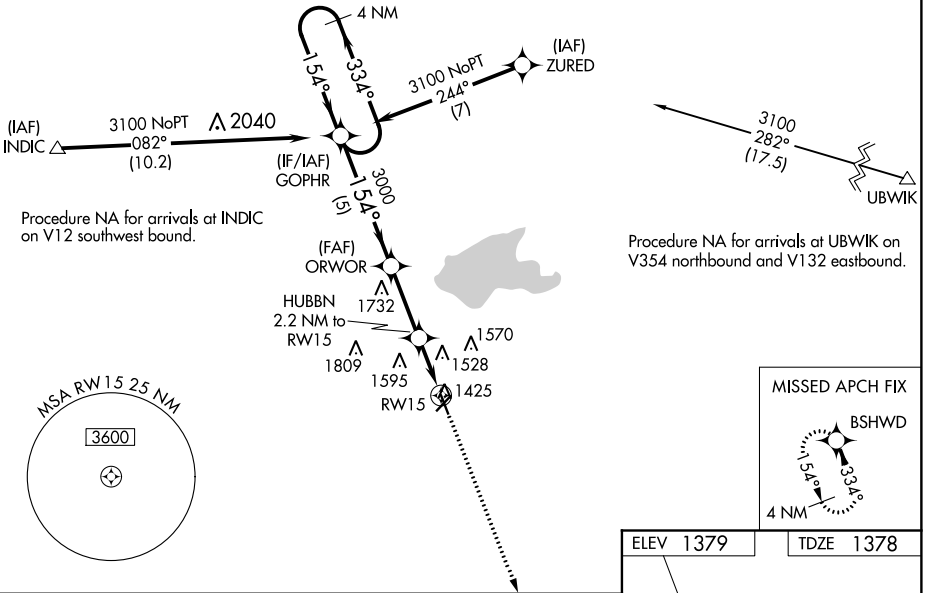
⚠ NA For uncompensated Baro-VNAV systems, LNAV/VNAV NA below -17°C (2°F) or above 54°C (130°F). DME/DME RNP-0.3 NA. Helicopter visibility reduction below 3/4 SM NA. When local altimeter setting not received, use Colonel James Jabara altimeter setting and increase all DA 51 feet and all MDA 60 feet; increase LNAV/VNAV all Cats visibility 1/8 mile. Baro-VNAV and VDP NA when using Colonel James Jabara altimeter setting.

MISSED APPROACH:
Climb to 3100 direct
BSHWD and hold.

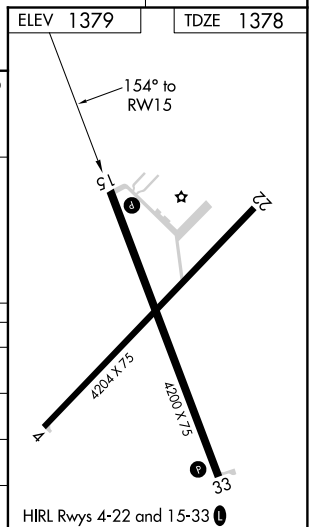
AWOS-3P
120.875

WICHITA APP CON
134.8 269.1

UNICOM
122.8 (CTAF) 0



CATEGORY	A	B	C	D
LPV DA	1628-1	250 (300-1)		NA
LNAV/VNAV DA	1843-1 5/8	465 (500-1 3/8)		NA
LNAV MDA	1780-1	402 (500-1)		NA
C CIRCLING	1820-1 441 (500-1)	1960-1 581 (600-1)		NA



NC-2, 06 DEC 2018 to 03 JAN 2019

NC-2, 06 DEC 2018 to 03 JAN 2019