

WAAS CH 87024 W08A	APP CRS 083°	Rwy Idg 3297 TDZE 879 Apt Elev 881
----------------------------------------	------------------------	---------------------------------------------------------------

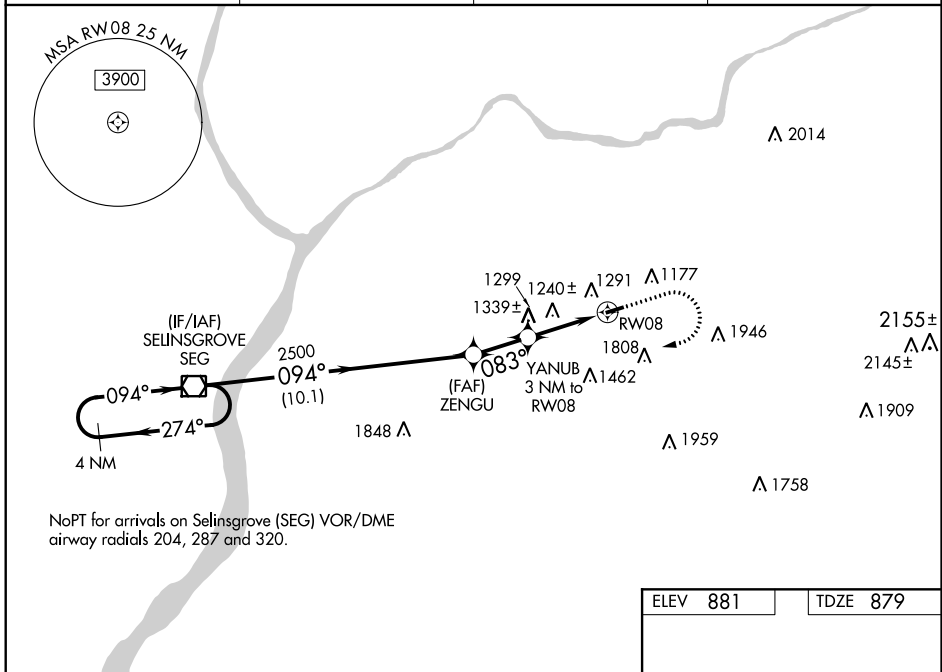
RNAV (GPS) RWY 8

NORTHUMBERLAND COUNTY (N79)

NA Baro-VNAV NA when using Selingsgrove altimeter setting. For uncompensated Baro-VNAV systems, LNAV/VNAV NA below -16°C (4°F) or above 54°C (130°F). Helicopter visibility reduction below 1 SM NA. DME/DME RNP-0.3 NA. Procedure NA at night. When local altimeter setting not received, use Selingsgrove altimeter setting, and increase all DA 94 feet and all MDA 100 feet, increase LPV all Cats visibility ¼ SM; LNAV/VNAV all Cats visibility ½ SM; and LNAV Cat C visibility ½ SM.

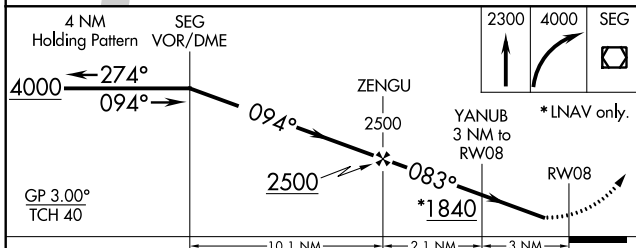
MISSED APPROACH:
Climb to 2300 then climbing right turn to 4000 direct SEG VOR/DME and hold.

AWOS-3 119.175	HARRISBURG APP CON 118.25 269.45	UNICOM 122.8 (CTAF)	121.8
--------------------------	--------------------------------------------	-------------------------------	--------------

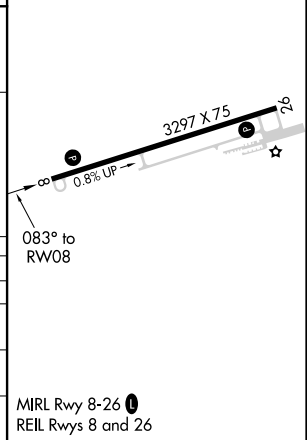


NoPT for arrivals on Selingsgrove (SEG) VOR/DME airway radials 204, 287 and 320.

ELEV 881	TDZE 879
-----------------	-----------------



CATEGORY	A	B	C	D
LPV DA	1146-1	267 (300-1)		NA
LNAV/VNAV DA	1603-2½	724 (800-2½)		NA
LNAV MDA	1620-1 741 (800-1)	1620-1¼ 741 (800-1¼)	1620-2½ 741 (800-2½)	NA
CIRCLING	1820-1¼ 939 (1000-1¼)	1860-1½ 979 (1000-1½)	1880-3 999 (1000-3)	NA



MIRL Rwy 8-26
REIL Rwy 8 and 26

NE-4, 06 DEC 2018 to 03 JAN 2019

NE-4, 06 DEC 2018 to 03 JAN 2019