

LOC/DME F-LVK 110.5 Chan 42	APP CRS 255°	Rwy Idg TDZE Apt Elev	5253 400 400
---	------------------------	-----------------------------	---

ILS RWY 25R

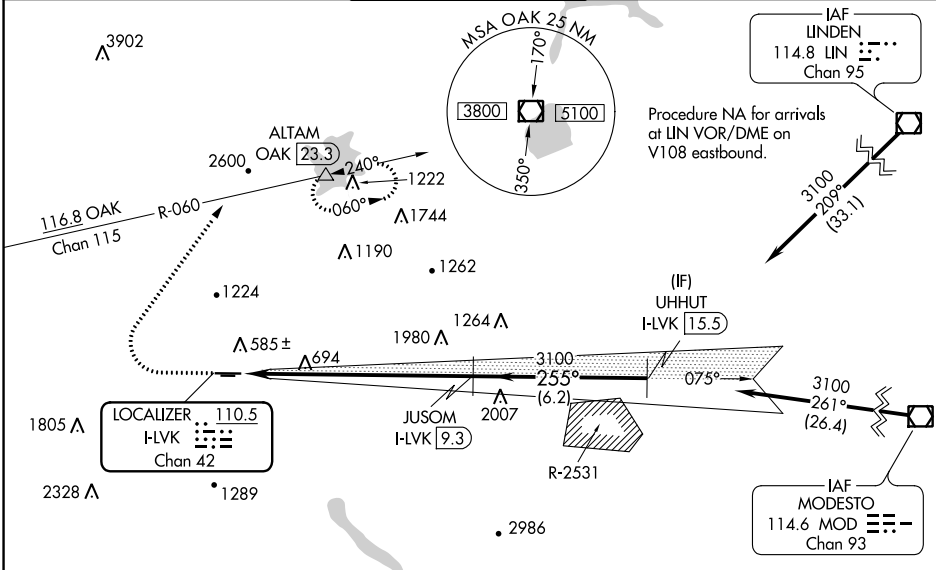
LIVERMORE MUNI (L.V.K)

Autopilot coupled approach NA below 1700. DME required.

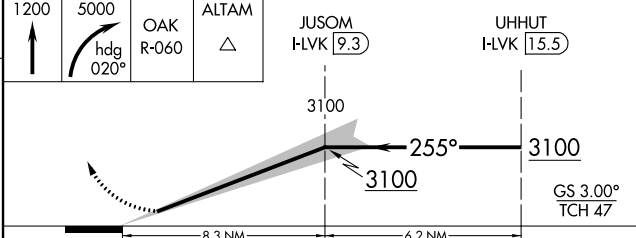
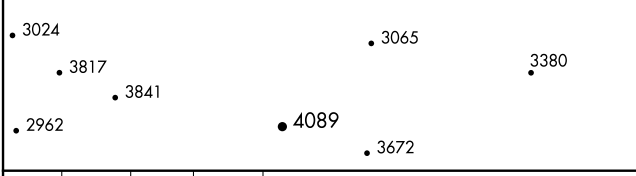
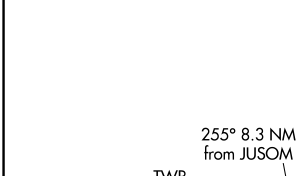


MISSED APPROACH: Climb to 1200 then climbing right turn to 5000 on heading 020° and OAK VOR/DME R-060 to ALTAM/OAK VOR/DME 23.3 DME and hold, continue climb-in-hold to 5000.
*Missed approach requires a minimum climb of 358 feet per NM to 3600, if unable to meet climb gradient, see LOC RWY 25R.

ATIS 119.65	NORCAL APP CON 123.85 278.3	LIVERMORE TOWER ★ 118.1 (CTAF) 239.25	GND CON 121.6	UNICOM 122.95
-----------------------	---------------------------------------	---	-------------------------	-------------------------



ELEV 400	TDZE 400
----------	----------



CATEGORY	A	B	C	D
S-ILS 25R*		600-1/2	200 (200-1/2)	

SW-2, 06 DEC 2018 to 03 JAN 2019

SW-2, 06 DEC 2018 to 03 JAN 2019