

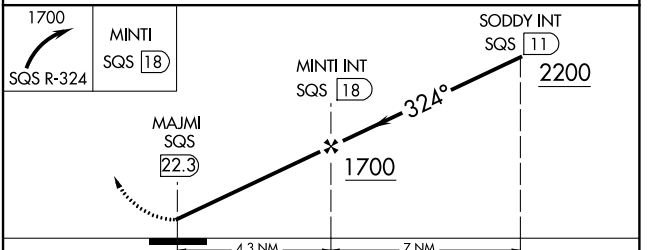
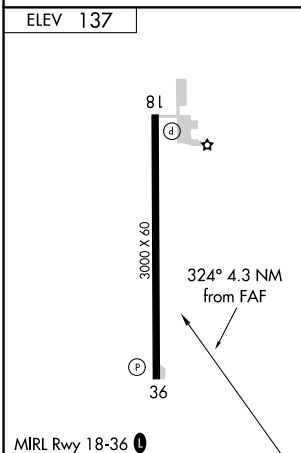
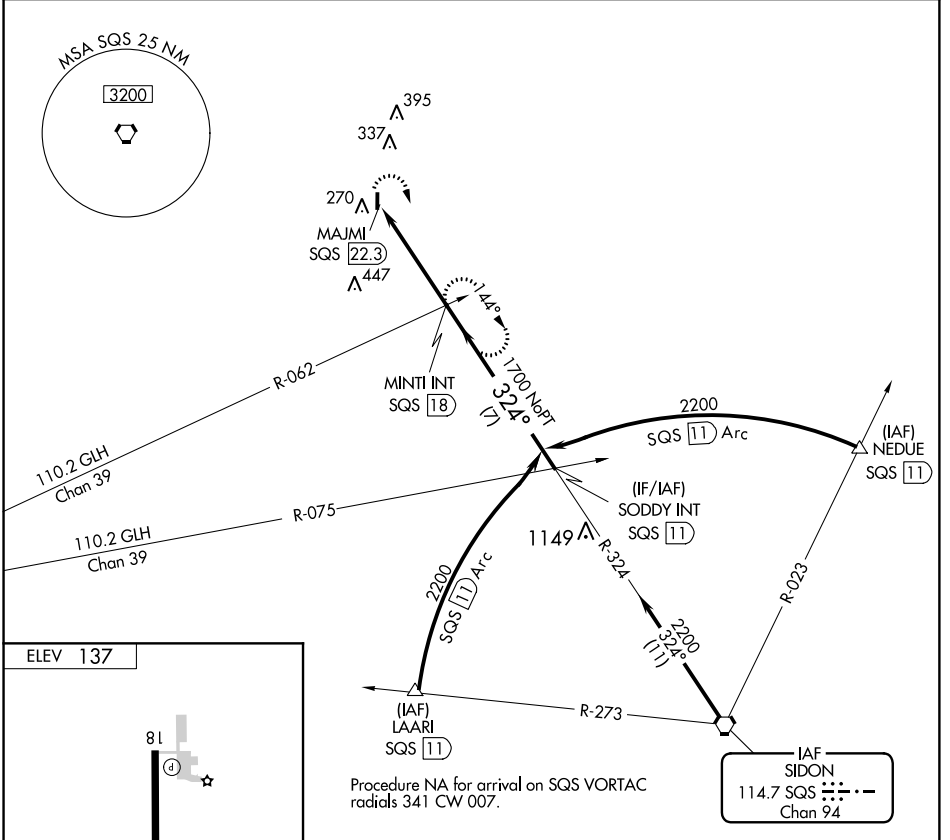
VORTAC SQS 114.7 Chan 94	APP CRS 324°	Rwy Idg TDZE Apt Elev	N/A N/A 137
--	------------------------	-----------------------------	--

VOR-A
RULEVILLE-DREW (M37)

NA Use Cleveland altimeter setting; when not received, use Greenwood altimeter setting and increase all MDA 40 feet, increase Cat C visibility ¼ mile. Helicopter visibility reduction below 1 SM NA. Procedure NA at night.

MISSED APPROACH: Climbing right turn to 1700 on SQS VORTAC R-324 to MINTI INT/SQS 18 DME and hold.

MEMPHIS CENTER 135.875 269.35	CTAF 122.9 0
--	-------------------------------



FAF to MAP 4.3 NM					
Knots	60	90	120	150	180
Min:Sec	4:18	2:52	2:09	1:43	1:26
CIRCLING	A	B	C	D	
	620-1 483 (500-1)	720-1 583 (600-1)	780-1¾ 643 (700-1¾)	NA	

SC-4, 06 DEC 2018 to 03 JAN 2019

SC-4, 06 DEC 2018 to 03 JAN 2019